


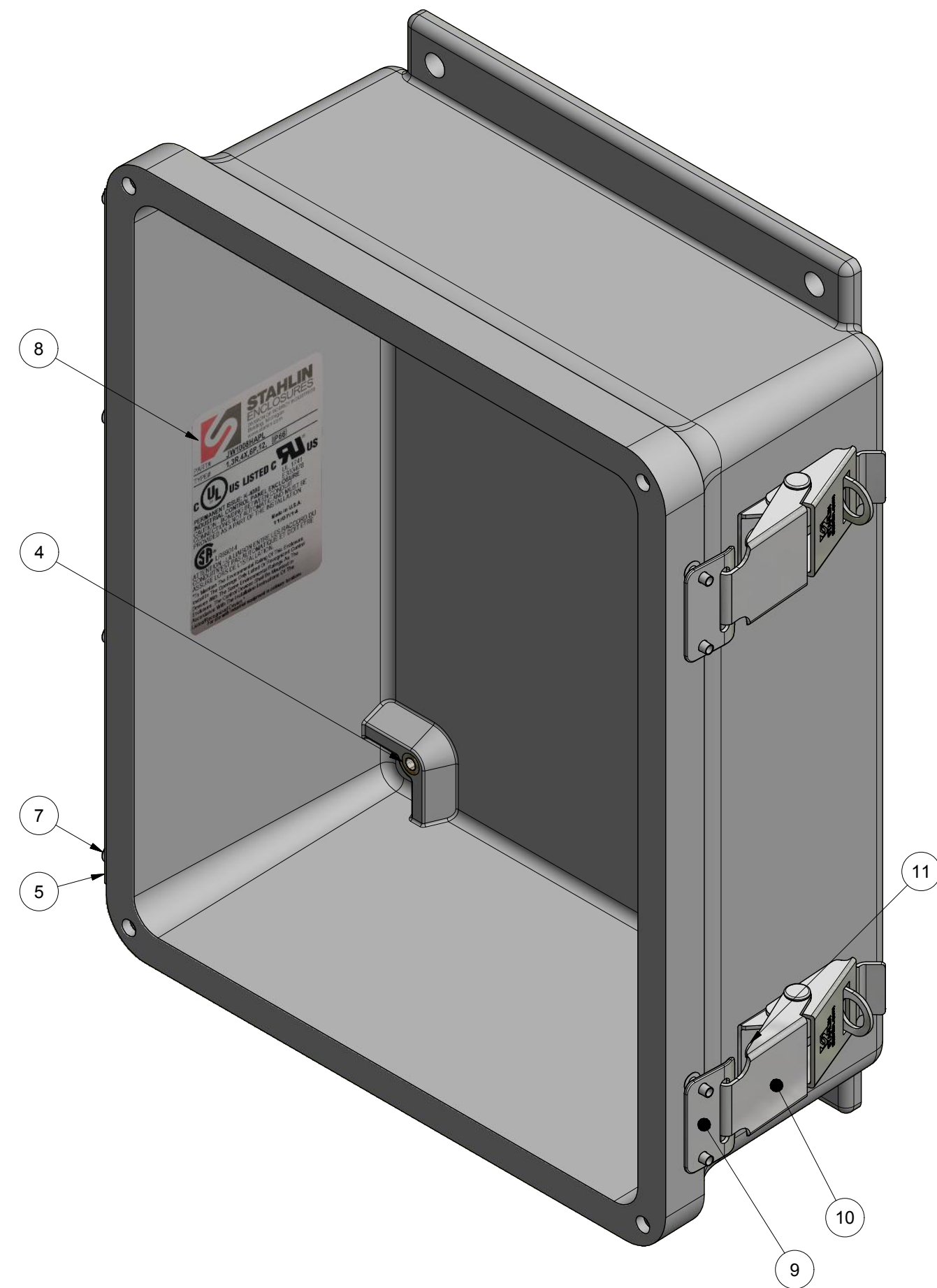
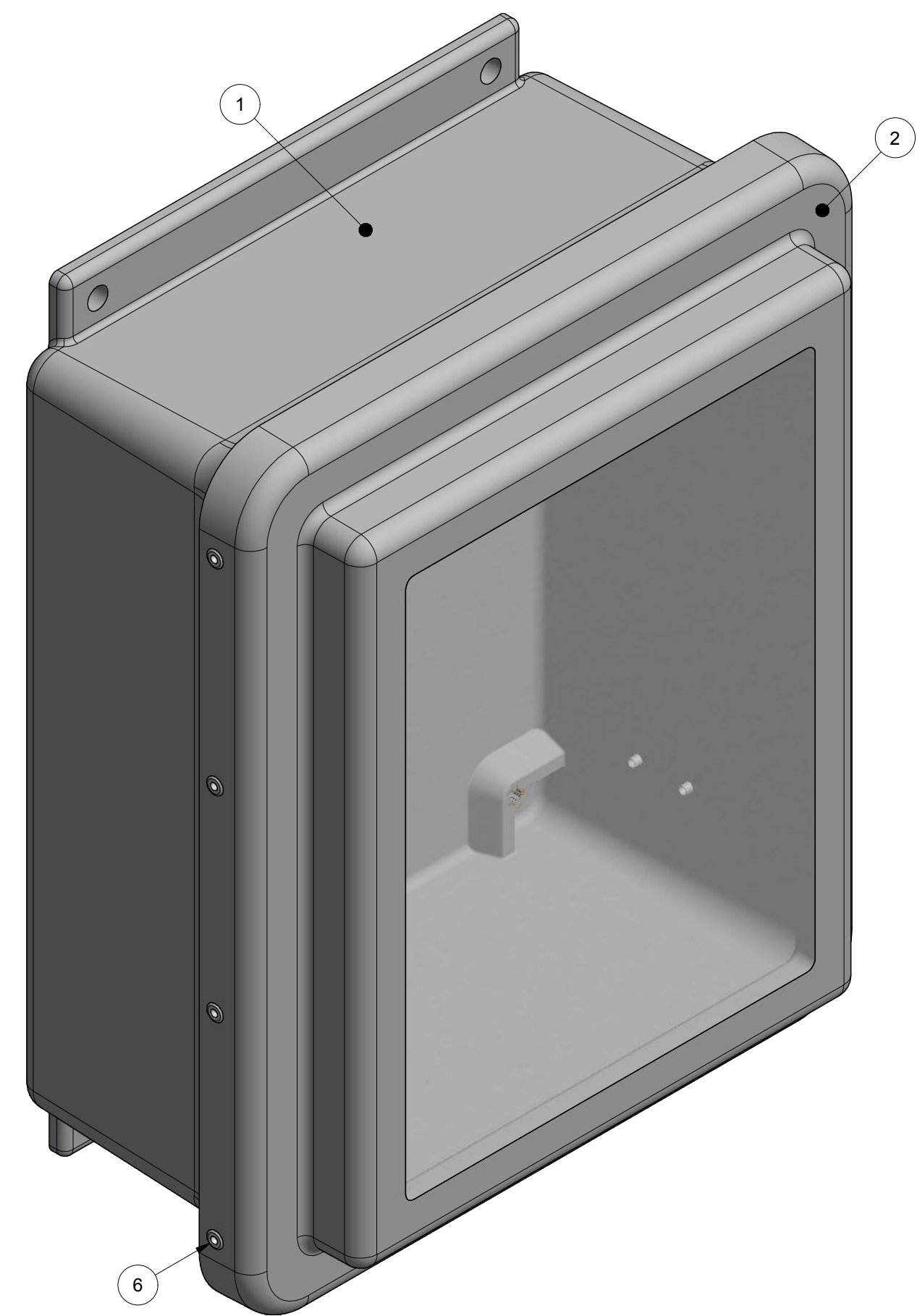
**DETAIL A**  
 WINDOW MATERIAL: S.A.R. ACRYLIC, 1/4" THICK  
 ABRABE INSIDE COVER SURFACE PRIOR TO BONDING  
 WINDOW BONDED USING MA-320  
 WINDOW SURFACE FLUSH TOLERANCE: +0.020 / -0.030  
 0.010 MAX. EXPANSION GAP BETWEEN COVER CUTOUT & WINDOW

THIS DRAWING IS THE SOLE AND EXCLUSIVE PROPERTY OF STAHLIN ENCLOSURES. NO PART OF THIS DRAWING MAY BE REPRODUCED, DISTRIBUTED, OR PUBLICALLY DISPLAYED IN ANY FORM OR BY ANY MEANS WITHOUT THE EXPRESS WRITTEN PERMISSION OF STAHLIN ENCLOSURES. ALL RIGHTS RESERVED. UNDER THE COPYRIGHT LAWS. COPYRIGHT © 2016 STAHLIN ENCLOSURES

**SPECIAL REQUIREMENTS**

NEMA 250: TYPE 1, 3R, 4X, 6P, 12 IEC 60529: IP66 COLOR: GLACIER GRAY (WPR3013) COLOR STANDARD: PANTONE 428 C		STANDARD P/N: JW1008HAPL	ALL DIMENSIONS ARE IN INCHES UNLESS OTHERWISE SPECIFIED	TOLERANCES UNLESS SPECIFIED	.XX ± 0.03	.XXX ± 0.010
MATERIAL: FIBERGLASS REINFORCED POLYESTER (FRP)		CUSTOMER DWG:	 <b>STAHLIN</b> A DIVISION OF ROBROY INDUSTRIES <i>Stahlin Non-Metallic Enclosures</i> 500 Maple Street Belding, Michigan 48809 Phone: 616-794-0700 Fax: 616-749-3378			
REVISION HISTORY		DRAWN BY	DATE	CUSTOMER	DWG	
REV	DESCRIPTION				JW1008HAPL	
-	-	-	01/05/16			
		SCALE	DESCRIPTION	PART NUMBER		
		DO NOT SCALE	STANDARD ENCLOSURE	FEJW1008HAPL		

8 7 6 5 4 3 2 1



PARTS LIST			
ITEM	QTY	PART NUMBER	DESCRIPTION
1	1	WP108H&LBOX	JW1008 MOLDED H&L BOX
2	1	WPAW1008HHL	JW1008HAPL GASKETED & WINDOWED COVER
3	1	WPJW1008RGLAS	ROUTED JW1008 GLASS
4	4	RMINS45821P	0.150" BRASS INSERT
5	1	RMHING9-1/2	9.5" HINGE
6	4	RMRIV42	RIVET
7	12	RMRIV43	RIVET
8	1	RMLABSTAHLIN3X2	JW1008HAPL LABEL
9	2	RMLATSSL	HPL LATCH
10	2	RMKEEPSL	HPL KEEPER
11	AR	RTV-732	SILICONE SEALANT

**NOTES:**  
 1. RTV 732 SILICONE SEALANT SHALL BE APPLIED UNDER ALL LATCHES AROUND LATCH HOLES AND TOP OF RIVET AFTER INSTALLATION

THIS DRAWING IS THE SOLE AND EXCLUSIVE PROPERTY OF STAHLIN ENCLOSURES. NO PART OF THIS DRAWING MAY BE REPRODUCED, DISTRIBUTED, OR PUBLICALLY DISPLAYED IN ANY FORM OR BY ANY MEANS WITHOUT THE EXPRESS WRITTEN PERMISSION OF STAHLIN ENCLOSURES. ALL RIGHTS RESERVED. UNDER THE COPYRIGHT LAWS. COPYRIGHT © 2016 STAHLIN ENCLOSURES

**SPECIAL REQUIREMENTS**

NEMA 250: TYPE 1, 3R, 4X, 6P, 12  
 IEC 60529: IP66  
 COLOR: GLACIER GRAY (WPR3013)  
 COLOR STANDARD: PANTONE 428 C

STANDARD P/N: JW1008HAPL  
 CUSTOMER DWG:

ALL DIMENSIONS ARE IN INCHES UNLESS OTHERWISE SPECIFIED  
 TOLERANCES UNLESS SPECIFIED .XX ± 0.03 .XXX ± 0.010

MATERIAL: FIBERGLASS REINFORCED POLYESTER (FRP)



**Stahlin Non-Metallic Enclosures**  
 500 Maple Street  
 Belding, Michigan 48809  
 Phone: 616-794-0700  
 Fax: 616-749-3378

DRAWN BY	DATE	CUSTOMER	DWG
DRH	01/05/16		JW1008HAPL
SCALE	DESCRIPTION	PART NUMBER	
DO NOT SCALE	STANDARD ENCLOSURE	FEJW1008HAPL	

8 7 6 5 4 3 2 1