

CASE STUDY

Stahlin® Enclosures Enhance Operational Excellence at OxBlue® by Solving the Challenge of Complete Protection and Continuous Service

THE SITUATION:

OxBlue®, a global leader in construction time-lapse and live streaming services, faces multifaceted challenges in ensuring seamless project monitoring and security across diverse environments worldwide. Based in Atlanta, Georgia with operations spanning all 50 states and 45 countries, OxBlue relies on robust technology solutions to maintain real-time visibility and safeguard critical assets.

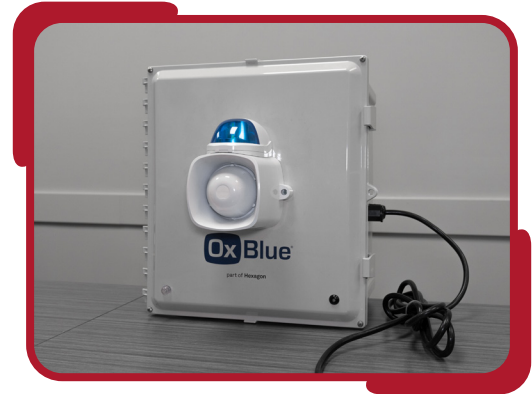
THE CHALLENGE:

OxBlue's technology demands are rigorous: continuous remote monitoring, real-time data access, and reliable security surveillance are imperative. Their systems must provide uninterrupted service while enduring a wide range of harsh environmental conditions. Striking this balance proved challenging; OxBlue needed enclosures that are not only durable but also customizable to meet specific application requirements. The bulky metal enclosures they were utilizing were not up to the task, as they were difficult to modify and incurred substantial freight expenses due to their weight, making them uneconomical.

THE SOLUTION:

Recognizing the company's need for superior protection, flexibility, and cost-effectiveness, OxBlue COO Rich George turned to Stahlin® Non-Metallic Enclosures. Renowned for their strength and reliability, Stahlin enclosures were the right choice to help meet OxBlue's stringent performance standards across diverse customer sectors, ranging from data centers and multifamily dwellings to multi-story commercial buildings and offices spanning several countries.

"Stahlin has become a trusted partner in our enterprise," George elaborates. "We utilize their PolyStar line of polycarbonate enclosures to house and safeguard electronic components that support construction sites, such as CPUs for video cameras and



OxBlue utilizes Stahlin enclosures for a variety of products because of their superior protection, flexibility, and cost-effectiveness.

modems to ensure reliable connectivity. These enclosures have proven instrumental thanks to their durability and customization capabilities. And, they've significantly slashed our costs without sacrificing the robust protection we require."

Rich Lussier, Vice President of Sales of local manufacturer's rep Levine Electronics and Lectric, Inc., emphasized that OxBlue sought specialized expertise that was not readily available from other enclosure providers. According to Lussier, Stahlin's unique ModRight™ program enabled OxBlue to meet precise application performance needs with ready-to-use enclosure solutions backed by an industry-best 10-year warranty.

"The ModRight program offers a blend of cutting-edge equipment and extensive in-house capabilities," Lussier says, "which allows Stahlin to process a wide range of modifications tailored for highly specific application needs before the enclosures ever leave the factory. Molded-in colors, EMI/RFI shielding, silk screening, digital printing, cutouts, windows, and vents—you name it, Stahlin can make it happen."

STAHLIN AND OXBLUE AT WORK

Currently, OxBlue uses Stahlin enclosures for multiple purposes. Among them:

120V Builder's Risk

This OxBlue product features a 16 x 14 polycarbonate Stahlin enclosure that reliably protects a battery used to temporarily power a security camera in the event that main power is lost or if power is not yet available on a jobsite. It also houses external components such as a speaker/strobe, microphone, and LED indicator light. The internal components include a printed circuit board, a power converter, and a PoE injector.

Other manufacturers had been unable to address the need for modifying an enclosure to support a heavy lithium battery. Through its ModRight program, Stahlin provided a customized weight distribution shelf capable of supporting a battery pack of nearly 200 pounds without causing any flexing or bending of the enclosure. The shelf features slots to accommodate straps, which provide additional security for the battery. Additionally, a custom back panel was provided to optimize space in the enclosure, allowing necessary equipment to be mounted on the rear wall. Digital logo art was also printed on the cover of this enclosure for identification purposes as well as aesthetic appeal.

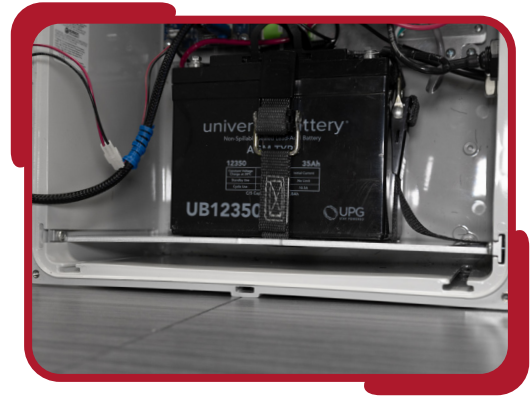
Periscope

Periscope is used to house a crank tool, preventing it from being removed for any reason, accidental or otherwise, from the product for which it is needed.

Installation of Periscope can require conformance to extremely confined areas. Meeting that need is an ideal use for Stahlin's PolySlim™, a low-profile polycarbonate enclosure that redefines space efficiency. Crafted for industries where space is at a premium, these lightweight, durable, visually appealing enclosures range in size from 10" x 8" x 3" to 24" x 24" x 6". They are available with opaque or clear covers and molded-in mounting feet, and the built-in DIN Rail mounting embosses on the back of the enclosure offer an alternative to back panel mounting. Digital logo art was also printed on the cover of this enclosure for identification purposes as well as aesthetic appeal.

Sapphire Cameras

Sapphire streaming video cameras enable users to view their projects in real-time through high-definition images and live video streaming. These cameras automatically store a minimum of two weeks of job site footage,



Stahlin's Weight Distribution Shelf utilizes the PolyStar enclosure's built-in T-slots to reliably support the battery of the 120V Builder's Risk without causing the bottom wall of the enclosure to deflect.



A Stahlin PolySlim low-profile enclosure secured to the base of an OxBlue Periscope. The enclosure prevents unauthorized access to the Periscope's crank tool when it is not in use.



Stahlin PolyStar's polycarbonate construction offers robust protection while maintaining ease of modification, such as adding holes and cutouts.

accessible remotely both day and night. The footage aids in documenting changes over time and provides job site security after-hours. When connected to solar power, Sapphire has access to a 5-day battery backup.

Security cameras provide security only if the cameras themselves are secure. In this instance, reliable, durable protection is provided by a Stahlin PolyStar 12" x 10" enclosure featuring a hinged, screw-down cover with no latches, designated as the "HW configuration". This configuration supplies added security because opening it requires the use of a tool for entry, rather than simply opening the latches. In addition to guarding against impact and vandalism, the Stahlin HW configuration is proven to protect against environmental damage from factors such as dust, dirt, debris, and ingress of water. This enclosure is modified with side holes and features a digitally printed logo on the cover for identification purposes as well as aesthetic appeal.

"We've asked them for things beyond what is in their catalog, and they are always game to work with us to find ways of getting us what we need," George says. "Working with Stahlin is very positive, and we've been happy with the end results of both the products we receive from them and their customer service."

CONCLUSION

By providing reliable, tailored solutions that exceed expectations, Stahlin continues to empower OxBlue to do what they do best—delivering unparalleled construction monitoring and security services worldwide.

"Stahlin has become a trusted partner in our enterprise... these enclosures have proven instrumental thanks to their durability and customization capabilities. And, they've significantly slashed our costs without sacrificing the robust protection we require."

-Rich George, OxBlue COO

THE VALUE OF A POSITIVE WORKING RELATIONSHIP

Thanks to their partnership with Stahlin Non-Metallic Enclosures, OxBlue has continued to satisfy their customers and meet even the most specific requirements. Troy Noonan, Supply Quality Engineer for OxBlue, reiterated that Stahlin's high quality products have contributed greatly to enhancing OxBlue's operational efficiency and reliability.

"Stahlin's proactive approach and seamless customization process has significantly streamlined our operations," Noonan affirms. "We depend on Stahlin because of the value we get from their enclosures. They go the extra mile to meet our needs."

Describing what it is like to work with Stahlin, Rich George added that even if a solution isn't readily apparent, the customer service team is willing to go above and beyond.

FOR MORE INFORMATION:

OxBlue
www.oxblue.com

Stahlin Enclosures
www.stahlin.com

**Levine Electronics
and Letric, Inc.**
www.l-3.com