

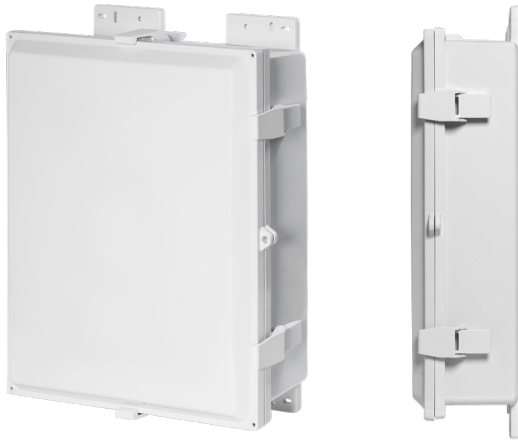
POLYSLIM™

Low-Profile Polycarbonate Enclosures

STAHLIN
A ROBROY Brand

ALL THE MOUNTING SPACE, WITHOUT THE ADDED DEPTH!

Get the most out of your installation space with Stahlin PolySlim! These tough, industrial strength enclosures are designed for OEMs and installers with low-profile installation requirements. Ideal for use on building exteriors and in tight spaces, they protect equipment and optimize depth while maintaining a traditional footprint!



MARKETS AND INDUSTRIES

- + Ideal for Non-Hazardous Industrial and Commercial applications where space is a premium
- + Low-profile enclosure optimizes the installation and protection of network components (routers and switches) in harsh conditions
- + Well-suited for electrical control, wireless communications, measurement, monitoring, and security applications with minimal-depth equipment

MATERIALS:

- + **Enclosure:** Polycarbonate with UV inhibitors
- + **Latches:** Available in either Polycarbonate or Stainless Steel
- + **Hardware:** Stainless Steel

INNOVATION

VALUE

Innovative, low-profile design,
industry standard height/width



Saves space, eliminates
unnecessary depth, reduces
material cost

Robust, smooth side
walls



Long dependable product life,
maximum fitting mounting
space

Aesthetic, low-profile
design



Offers a clean look for brand
promotion in areas of high
visibility

Installation flexibility, added DIN
rail embosses, multiple mounting
hole positions



Reduces need for costly on-site
modification, back panel material
cost

POLYSLIM™ Low-Profile Polycarbonate Enclosures

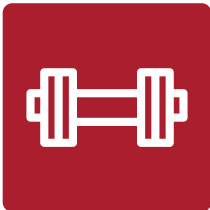
are ideally suited for:



RUGGED APPLICATIONS REQUIRING ENCLOSURE STRENGTH

Over 40% stronger than the competition*, Stahlin's thick, robust side walls eliminate flexing. Heavy-duty and durable, they are produced from a polycarbonate material formulation which provides high-impact resistance and dimensional stability. Our enclosures are popular and reliable in industrial and manufacturing applications within continuously demanding environments.

**Results of independent testing conducted with off-the-shelf competitive polycarbonate enclosures.*



APPLICATIONS WITH LIKELY NEED FOR IMPACT RESISTANCE

Metal enclosures are vulnerable to denting upon impact, which, along with aesthetic concerns, can compromise the integrity of the seal that protects everything housed within the enclosure. Although Stahlin polycarbonate has a lighter weight than other materials, it boasts a higher impact resistance.



APPLICATIONS REQUIRING CORROSION RESISTANCE

Stahlin polycarbonate enclosures are available with full non-metallic or stainless steel cover latches and full non-metallic hinges that don't penetrate the enclosure and meet NEMA Type 4X requirements, which specifies an increased level of protection from corrosion. Because of this, we meet the demands of diverse industries from oil and gas to carwashes to marine environments.



APPLICATIONS WHERE EASE OF MODIFICATION IS IMPORTANT

Stahlin polycarbonate enclosures are ideal for protecting wireless technology because they allow wireless and radio frequency signals to pass unobstructed through the enclosure. This allows you to have the antennas inside of the enclosure. Additionally, there is the option to block EMI/RFI frequencies if needed, giving you more flexibility than metal enclosures.



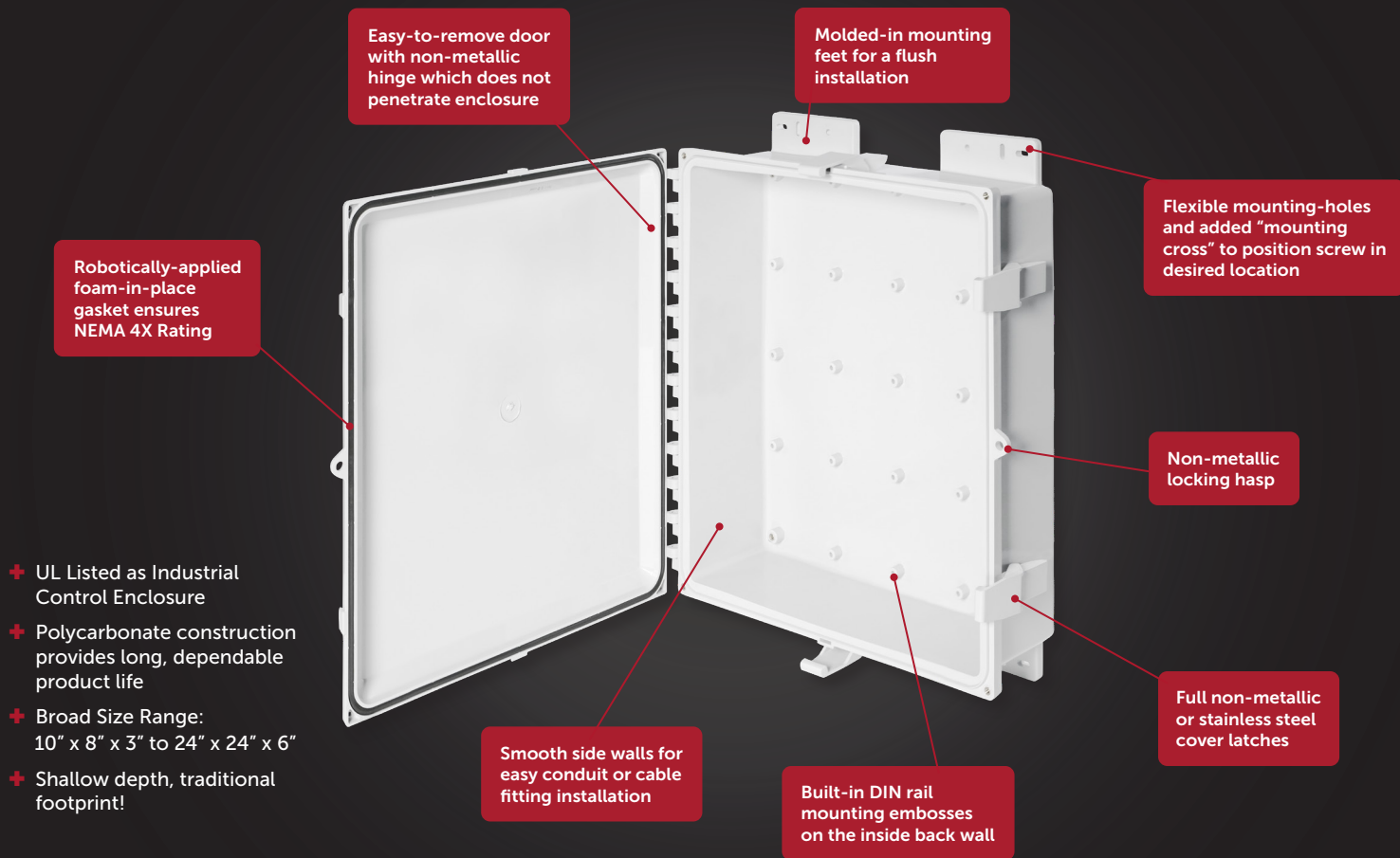
APPLICATIONS WHERE INSTALLATION AND LABOR ARE CHALLENGES

Polycarbonate, compared with metal enclosures, is lightweight, making it easier and quicker to install; thereby being of value in overall cost reduction.



APPLICATIONS WHERE UV RESISTANCE IS IMPORTANT

Because of natural resistance to UV degradation, polycarbonate enclosures can weather the passage of time, even in harsh exterior applications. Stahlin polycarbonate enclosures carry an f1 rating for outdoor use per UL 746C.



INNOVATIVE FEATURES

- + Available in seven sizes from 10" x 8" x 3" to 24" x 24" x 6"
- + One enclosure, one solution - can be configured as hinged/screw cover or hinged/latched cover
- + Lightweight, high-impact rated, UV resistant polycarbonate material construction
- + Non-metallic hinge does not penetrate inside enclosure
- + Thick, robust side wall construction eliminates side wall flexing
- + Built-in DIN rail mounting embosses in the back of the enclosure
- + ABS back panel option to optimize wireless signal transmission
- + Shallow design is ideal for low profile applications and equipment
- + Latch options – fully non-metallic or stainless steel
- + Clear or opaque cover options
- + Stainless steel hardware included
- + Larger sizes are compatible with Stahlin SolarShield HMI Cover



RATINGS AND LISTINGS:

- + NEMA 10250, UL 50, UL 50e, UL 508A
- + cULus Listed / CSA Std. C22.2
- + Type 1, 3R, 4, 4X, 6P, 12
- + IEC Ingress Rating: IP66, IP68, as designated
- + Flammability Rating: UL94-5VA
- + Outdoor Exposure UL 746C: (f1) Rated
- + Operating Temperature Rating: -40°F to +248°F (-40°C to +120°C)
- + Certifications and Compliance: cULus, CE, REACH, and RoHS

Back panels available in ABS material to optimize wireless signal transmission



Optional ABS back panel



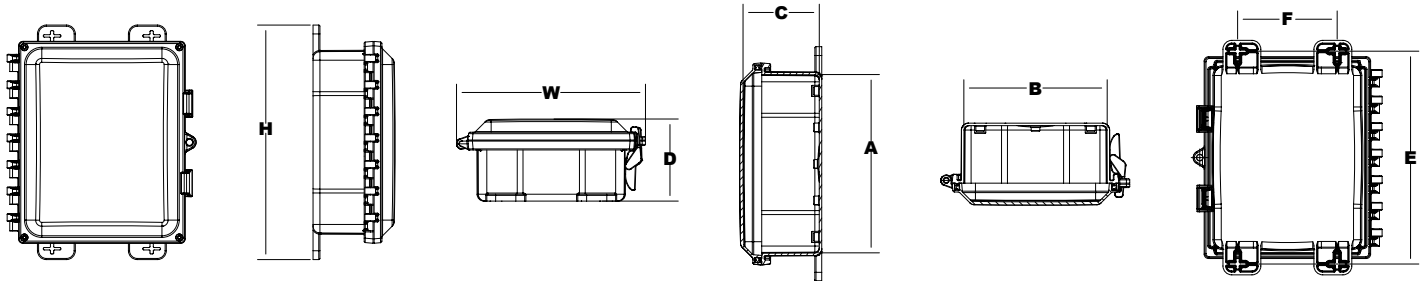
CATALOG NUMBERS AND DIMENSIONS

All dimensions listed in inches

PolySlim Low-Profile Polycarbonate Enclosures					
Enclosure Size	Opaque Cover Catalog #	Clear Cover Catalog #	Opaque Cover with Stainless Steel Latches Catalog #	Clear Cover with Stainless Steel Latches Catalog #	Back Panel Catalog #
10 x 8 x 3*	PC100803	PC100803CC	PC100803SS	PC100803CCSS	BP108**
12 x 10 x 4*	PC121004	PC121004CC	PC121004SS	PC121004CCSS	BP1210**
14 x 12 x 4	PC141204	PC141204CC	PC141204SS	PC141204CCSS	BP1412**
16 x 14 x 4	PC161404	PC161404CC	PC161404SS	PC161404CCSS	BP1614**
18 x 16 x 4	PC181604	PC181604CC	PC181604SS	PC181604CCSS	BP1816**
20 x 16 x 4	PC201604	PC201604CC	PC201604SS	PC201604CCSS	BPJ2016**
24 x 24 x 6	PC242406	PC242406CC	PC242406SS	PC242406CCSS	BP2424PC**

* Available in HW screw-down cover configuration - Add HW suffix to end of catalog number

**Add suffix for material desired: AL = aluminum, CS = carbon steel, ABS = ABS material



In-Depth Dimensions			
Enclosure Size	Overall H x W x D	Inside H x W x D	Mounting Feet E x F
10 x 8 x 3	13.25 x 10.68 x 4.64	10.07 x 8.10 x 4.31	12.03 x 5.63
12 x 10 x 4	15.25 x 12.68 x 5.38	12.09 x 10.09 x 5.05	14.03 x 7.63
14 x 12 x 4	16.88 x 14.68 x 5.39	14.09 x 12.06 x 5.20	16.03 x 9.63
16 x 14 x 4	19.25 x 16.68 x 5.35	16.15 x 14.15 x 5.07	18.03 x 11.63 / 18.03 x 8.00*
18 x 16 x 4	21.75 x 18.68 x 5.41	18.15 x 16.15 x 5.08	20.50 x 13.50 / 20.50 x 7.84*
20 x 16 x 4	23.25 x 18.68 x 5.47	20.09 x 16.12 x 5.14	22.03 x 13.63 / 22.03 x 10.00*
24 x 24 x 6	26.73 x 26.68 x 7.41	24.13 x 24.14 x 7.08	25.73 x 18.00

*Second set of dimensions indicates inside mounting position



Version 6, revised 12/06/24

500 Maple Street, Belding, MI 48809 | csr@robroyenclosures.com | (616) 794-0700