

Enclosures **DuraBoxx Series**

## Fiberglass Enclosure 7 x 7 x 4 Inches DuraBoxx Series Shallow with Opaque Lift Off Cover



**Catalog  
Number**

**D774W**

**UPC**

**785928906121.0**

List Price

**\$158.73**

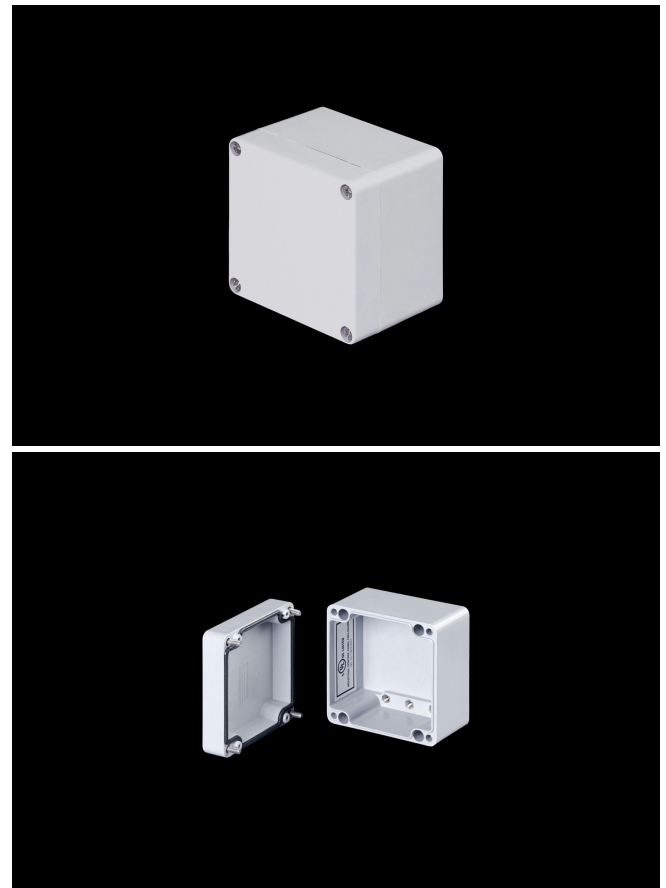
### DESCRIPTION

7H x 7W x 4D Inches DuraBoxx Series Shallow Fiberglass Enclosure are suited for indoor or outdoor environments in both commercial and industries environments such as mining, oil, gas, wastewater treatment and petro-chem. Their flush cover design with captive lid screws makes them well suited for high-end electronic applications such as wireless communications and operator interfaces.

### APPLICATION

With its sleek design; shallow depths and flush cover these enclosures are suited for high-end electronic applications

### FEATURES



- Flat opaque cover with captive cover screws
- DIN rail mounting capabilities
- Back Panels Available for all sizes

## General Information

Color	Gray
Cover Type	Opaque
Material	Fiberglass
Back Panel Screw Size	M6 x 9.5mm
Back Panel Recommended Torque	16-20 in-lbs
Back Panel Screw Material	304 SS
Cover Screw Size	M6-1.0 x 35mm
Cover Screw Recommended Torque	20-24 in-lbs
Cover Screw Material	304 SS
Mounting Foot Screw Recommended Torque	20-24 in-lbs
Installation Mounting Torque	20-24 in-lbs Max
Metal Inserts	Brass
Gasket Material	Poured In Place (PIP) Polyurethane Seamless
Country of Origin	India

## DIMENSIONS

Height (in)	5.0
Width (in)	9.0
Depth (in)	4.0
Height (mm)	127.0
Width (mm)	228.6
Depth (mm)	101.6
Usable Depth (in)	2.9
Usable Depth (mm)	74.0

## STANDARDS

---

NEMA 10250; UL 50; UL 50e; cULus Listed File  
UL508A #E64358

CSA Std. C22.2 File LR069014

Type 1; 3; 3S; 4; 4X; 6; 6P; 12

IEC 60529; UL Listed IP66; IP67; IP68  
#E362920

Temperature Range °F -26°F to +257°F

Temperature Range °C -32°C to +125°C

Flammability Rating UL94-V0

Outdoor Exposure UL746c (f1) Rated

CE Certified