

Enclosures **PolyStar Series**

Polycarbonate Enclosure 12 x 10 x 6 Inches PolyStar Series Opaque Cover with Weight Distribution Shelf



**Catalog
Number**

PCWD1210

UPC

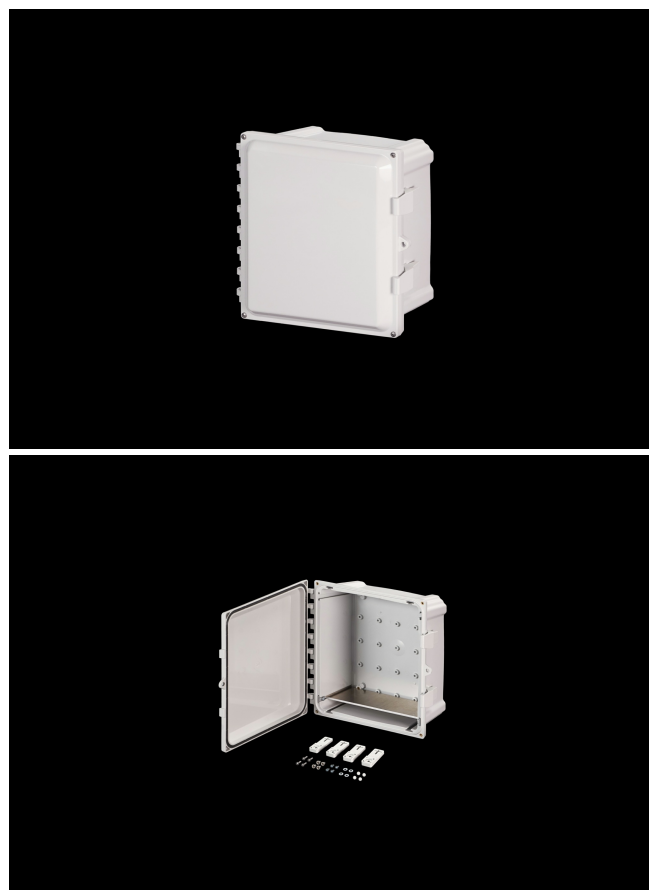
785928580246

DESCRIPTION

12H x 10W x 6D Inches PolyStar™ Series polycarbonate enclosure with weight distribution shelf provides an extremely rugged support system when adding heavy equipment in polycarbonate enclosures. Ideal for support when adding a power supply, battery, or heavy equipment which could potentially deflect the enclosure bottom wall. Features an opaque cover which is hinged, latched and padlockable.

APPLICATION

- Suitable for heavy industrial; commercial; and OEM applications. Includes a Weight Distribution Shelf which provides an extremely rugged support system when adding heavy equipment in non-metallic enclosures.
- Weight distribution shelf is ideal for support when adding a power supply, battery, or heavy equipment which would otherwise deflect the enclosure bottom wall.
- Ideal for enclosure mounting in heavy industrial; commercial; and OEM applications
- Used indoors or outdoors



- Used indoors or outdoors and in highly corrosive areas
- Provides protection against rain; sleet; snow; splashing water; hose-directed water; submersion; sun/UV and flame protection.

FEATURES

- Includes weight distribution shelf for mounting of heavy equipment inside the enclosure and eliminates risk of bottom wall deflection
- Easy to remove lid
- High performance inserts
- Integrated padlock hasp
- Flush-fit side mount swing panel and DIN rail system
- Molded in bosses
- Back Panels Available for all sizes
- Robust Mounting Feet Included
- Single SKU with multiple cover attachment options

General Information

Color	Gray
Cover Type	Opaque
Mounting Type	Wall Mount
Material	Polycarbonate
Back Panel Screw Size	#10-32 x 3/8
Back Panel Recommended Torque	16-20 in-lbs
Back Panel Screw Material	Zinc Plated
Cover Screw Size	#10-32 x 5/8
Cover Screw Recommended Torque	20-24 in-lbs
Cover Screw Material	304 SS
Mounting Flange Screw Size	1/4-20 x 1/2
Mounting Flange Screw Recommended Torque	10-14 in-lbs
Installation Mounting Torque	25-30 in-lbs Max
Metal Inserts	Brass
Hinge Material	Integral Polycarbonate
Latch Material	Polycarbonate
Gasket Material	Poured In Place (PIP) Polyurethane Seamless
Country of Origin	USA

DIMENSIONS

Height (in)	12.0
Width (in)	10.0
Depth (in)	6.0
Height (mm)	305.0
Width (mm)	254.0
Depth (mm)	152.0
Usable Depth (in)	6.6
Usable Depth (mm)	167.0

STANDARDS

NEMA 10250; UL 50; UL 50e; cULus Listed File
UL508A #E319779

CSA Std. C22.2 cULus Listed File
#E319779

Type 1; 3R; 4; 4X; 6P; 12

IEC 60529; UL Listed IP66; IP68
#E362920

Temperature Range °F -40°F to +248°F

Temperature Range °C -40°C to +120°C

Flammability Rating UL94-5VA

Outdoor Exposure UL746c (f1) Rated

CE Certified