

Enclosures **N Series Wall Mount**

Fiberglass Enclosure 20 x 16 x 10 Inches N Series with Window and Stainless Steel Hinged, Latched Opaque Cover



**Catalog
Number**

NW201610HWT

UPC

785928548994.0

List Price

\$1843.18

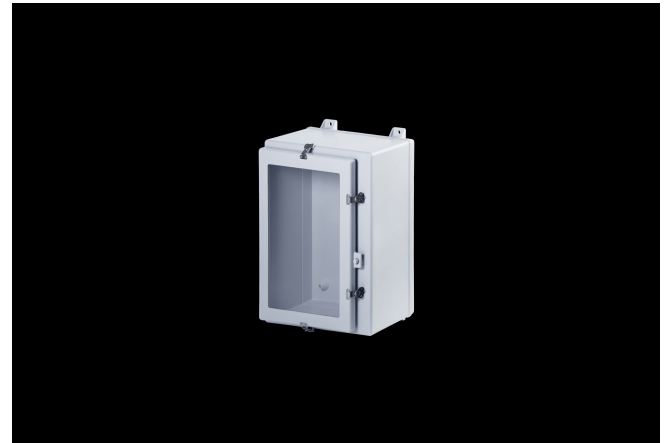
DESCRIPTION

20H x 16W x 10D N Series Fiberglass Enclosure with an "HWT" Opaque Cover (Type 4X, Stainless Steel Hinged, Latched Down) is designed to accommodate electrical, electronic, instrumentation and mechanical controls indoors and outdoors where corrosion resistant watertight enclosures are needed to provide protection against windblown dust and rain, splashing and hose directed water. The "N" designation reflects a NEMA range series of large capacity enclosures.

APPLICATION

Designed to accommodate electrical; electronic; instrumentation and mechanical controls

FEATURES



- Flush Bonded Window
- Chemically resistant fiberglass reinforced polyester
- Memory retaining polyurethane gasket
- 304 stainless steel hardware
- Integral mounting feet
- Molded in panel mounting inserts or studs
- High temperature; flame retardant; non corrosive; environmental designs
- Wall mount or free standing configurations
- Manufactured with SolarGuard®, Stahlin's proprietary formulation of non-halogenated fiberglass, offering superior resistance to outdoor exposure, chemicals and flames.
- Back Panels Available for all sizes

General Information

Color	Gray
Cover Type	Window
Material	Fiberglass
Back Panel Screw Size	3/8-16 x 1/2
Back Panel Recommended Torque	28-32 in-lbs
Back Panel Screw Material	304 SS
Installation Mounting Torque	80 in-lbs Max
Metal Inserts	Brass
Hinge Material	304 SS
Latch Material	304 SS
Gasket Material	Poured In Place (PIP) Polyurethane Seamless
Country of Origin	USA

DIMENSIONS

Height (in)	22.8
Width (in)	16.9
Depth (in)	11.8
Height (mm)	577.9
Width (mm)	428.5
Depth (mm)	299.0
Usable Depth (in)	10.3
Usable Depth (mm)	261.0

STANDARDS

NEMA 10250; UL 50; UL 50e; UL508A	cULus Listed File #E64358
CSA Std. C22.2	cULus Listed File #E64358
Type	1; 3; 3R; 4; 4X; 12
IEC 60529; UL Listed #E362920	IP66
Temperature Range °F	-76°F to +274°F
Temperature Range °C	-60°C to +134°C
Window Temperature Range °F	-26°F to +170°F
Window Temperature Range °C	-32°C to +76°C
IEC 62262 Impact Rating Listed	IK10 per File #E362920
Flammability Rating	UL94-5VA
Window Flammability Rating	UL94V-HB
Outdoor Exposure UL746c	(f1) Rated
CE	Certified