

Enclosures **PolyStar Series**

Polycarbonate Enclosure 20 x 16 x 8 Inches PolyStar Series Opaque Cover with Weight Distribution Shelf



Catalog Number

PCWD2016

UPC

785928580284.0

List Price

\$674.87

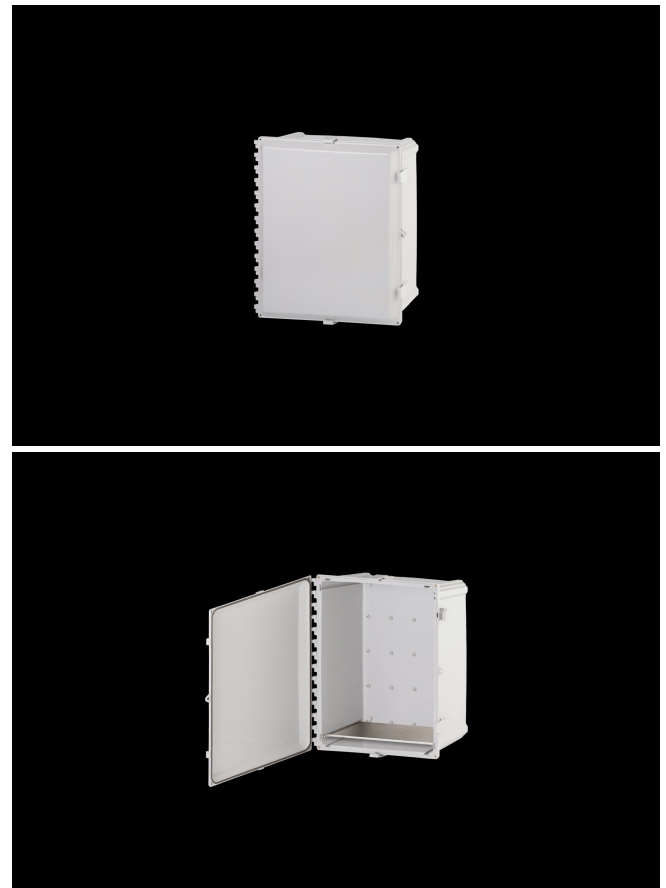
DESCRIPTION

20H x 16W x 8D Inches PolyStar™ Series polycarbonate enclosure with weight distribution shelf provides an extremely rugged support system when adding heavy equipment in polycarbonate enclosures. Ideal for support when adding a power supply, battery, or heavy equipment which could potentially deflect the enclosure bottom wall. Features an opaque cover which is hinged, latched and padlockable.

APPLICATION

Suitable for heavy industrial; commercial; and OEM applications. Includes a Weight Distribution Shelf which provides an extremely rugged support system when adding heavy equipment in non-metallic enclosures.

FEATURES



- Includes weight distribution shelf for mounting of heavy equipment inside the enclosure and eliminates risk of bottom wall deflection
- Easy to remove lid
- High performance inserts
- Integrated padlock hasp
- Flush-fit side mount swing panel and DIN rail system
- Molded in bosses
- Back Panels Available for all sizes
- Robust Mounting Feet Included
- Single SKU with multiple cover attachment options

General Information

| | |
|--|--|
| Color | Gray |
| Cover Type | Opaque |
| Material | Polycarbonate |
| Back Panel Screw Size | #10-32 x 3/8 |
| Back Panel Recommended Torque | 16-20 in-lbs |
| Back Panel Screw Material | Zinc Plated |
| Cover Screw Size | #10-32 x 5/8 |
| Cover Screw Recommended Torque | 20-24 in-lbs |
| Cover Screw Material | 304 SS |
| Mounting Flange Screw Size | 1/4-20 x 1/2 |
| Mounting Flange Screw Recommended Torque | 10-14 in-lbs |
| Installation Mounting Torque | 25-30 in-lbs Max |
| Metal Inserts | Brass |
| Hinge Material | Integral Polycarbonate |
| Latch Material | Polycarbonate |
| Gasket Material | Poured In Place (PIP) Polyurethane Seamless |
| Country of Origin | USA |

DIMENSIONS

| | |
|-------------------|-------|
| Height (in) | 20.0 |
| Width (in) | 16.0 |
| Depth (in) | 8.0 |
| Height (mm) | 508.0 |
| Width (mm) | 508.0 |
| Depth (mm) | 203.0 |
| Usable Depth (in) | 8.7 |
| Usable Depth (mm) | 220.0 |

STANDARDS

| | |
|-----------------------------------|----------------------------|
| NEMA 10250; UL 50; UL 50e; UL508A | cULus Listed File #E319779 |
| CSA Std. C22.2 | cULus Listed File #E319779 |
| Type | 1; 3R; 4; 4X; 6P; 12 |
| IEC 60529; UL Listed #E362920 | IP66 |
| Temperature Range °F | -40°F to +248°F |
| Temperature Range °C | -40°C to +120°C |
| Flammability Rating | UL94-5VA |
| Outdoor Exposure UL746c | (f1) Rated |
| CE | Certified |