

Enclosures J Series

## Fiberglass Enclosure 10 x 8 x 4 Inches J Series with Hinged, Screw Down Opaque Cover



**Catalog  
Number**

J1008HW

**UPC**

785928211034.0

List Price

**\$202.15**

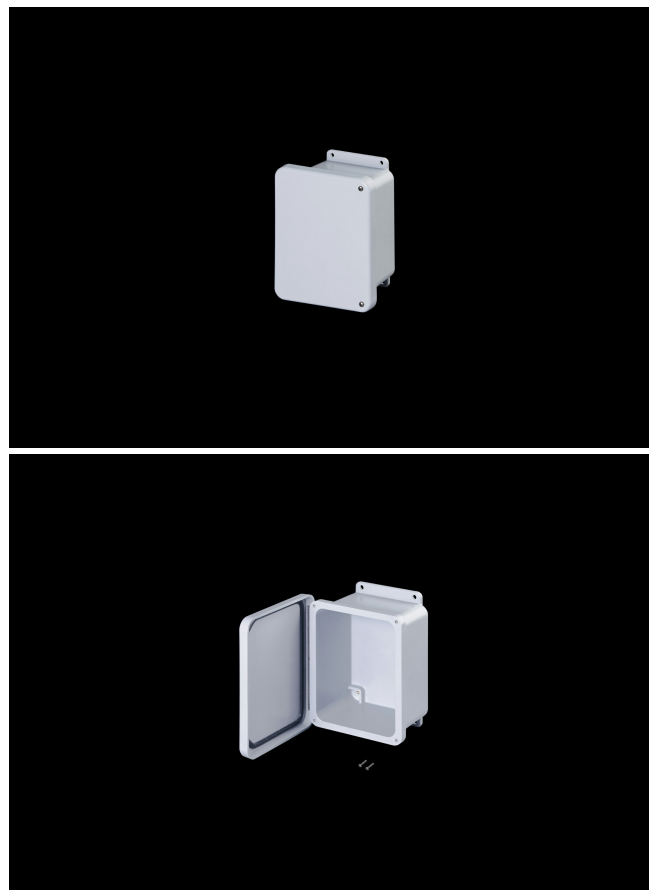
### DESCRIPTION

10H x 8W x 4D Inches J Series Fiberglass Enclosure with an "HW" Opaque Cover (Hinged, 2 Cover Screws) is designed for general electrical and electronic applications. Simple in its design, the enclosure can be configured with modifications such as cutouts and windows. Featuring a modest overhand cover on a flange mounted base, they offer unobstructed side-walls, built in mounting capabilities and a protective wrap around cover. J Series Products enhance any instrument installation.

### APPLICATION

Industrial enclosure for harsh; aggressive environments

### FEATURES



- Increased wall thickness vs. competitive models offers structural support and prevents potential water ingress
- Integral mounting flange vs. mounting feet (no assembly required)
- Molded-in inserts provide added pull-out strength
- Opaque Cover
- Overhang cover on smooth sided base
- High temperature; flame retardant; non-corrosive
- All stainless hardware latches and screws
- Chemically resistant; fiberglass reinforced polyester
- Non-corrosive; environmental designs
- Stainless steel retention chain on screw covers
- Continuous polyurethane gasket
- Manufactured with SolarGuard®, Stahlin's proprietary formulation of non-halogenated fiberglass, offering superior resistance to outdoor exposure, chemicals and flames.
- Back Panels Available for all sizes

## General Information

|                                |  |
|--------------------------------|--|
| Color                          | Gray   |
| Cover Type                     | Opaque   |
| Material                       | Fiberglass                                     |
| Back Panel Screw Size          | #10-32 x 3/8                                   |
| Back Panel Recommended Torque  | 16-20 in-lbs                                   |
| Back Panel Screw Material      | 304 SS   |
| Cover Screw Size               | #10-24 x 5/8                                   |
| Cover Screw Recommended Torque | 20-24 in-lbs                                   |
| Cover Screw Material           | 304 SS   |
| Installation Mounting Torque   | 45 in-lbs Max                                  |
| Metal Inserts                  | Brass  |
| Hinge Material                 | 304 SS   |
| Gasket Material                | Poured In Place (PIP)<br>Polyurethane Seamless |
| Country of Origin              | USA  |

## DIMENSIONS

|                   |       |
|-------------------|-------|
| Height (in)       | 11.6  |
| Width (in)        | 9.4   |
| Depth (in)        | 4.2   |
| Height (mm)       | 295.4 |
| Width (mm)        | 239.0 |
| Depth (mm)        | 107.2 |
| Usable Depth (in) | 3.4   |
| Usable Depth (mm) | 87.0  |

## STANDARDS

|                                   |                           |
|-----------------------------------|---------------------------|
| NEMA 10250; UL 50; UL 50e; UL508A | cULus Listed File #E64358 |
| CSA Std. C22.2                    | cULus Listed File #E64358 |
| Type                              | 1; 3R; 4; 4X; 6P; 12      |
| IEC 60529; UL Listed #E362920     | IP66                      |
| UL1741                            | UL Listed File #E333478   |
| Plenum Space UL2043               | Compliant                 |
| Temperature Range °F              | -76°F to +274°F           |
| Temperature Range °C              | -60°C to +134°C           |
| IEC 62262 Impact Rating Listed    | IK10 per File #E362920    |
| Flammability Rating               | UL94-5VA                  |
| NFPA No. 101 Flame Spread         | Class A(1)                |
| Outdoor Exposure UL746c           | (f1) Rated                |
| CE                                | Certified                 |