

Enclosures **PolySlim Series**

Polycarbonate Low Profile Enclosure 20 x 16 x 4 Inches PolySlim™ Series with Opaque Cover and Stainless Steel Latches



**Catalog
Number**

PC201604SS

UPC

785928581496.0

List Price

\$582.57

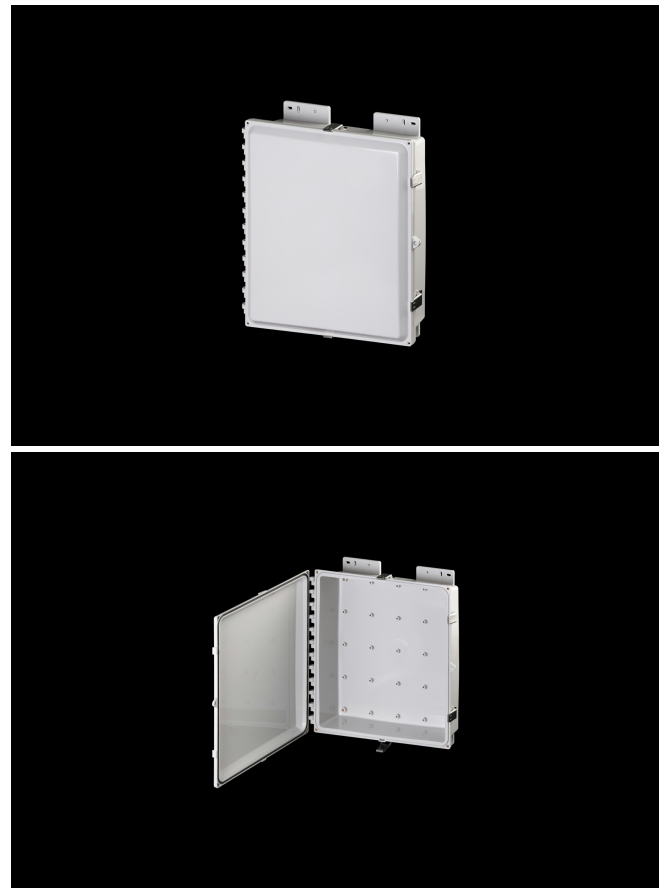
DESCRIPTION

20H X 16W X 4D Inches PolySlim™ Series polycarbonate enclosure is a high performance, shallow depth, polycarbonate enclosure applicable for heavy industrial conditions, but with a refined style suitable for commercial, industrial and OEM design applications. PolyStar Series enclosures are rain-tight and watertight rated for use in both interior and exterior applications. This "HPL" configuration features an opaque cover with stainless steel latches that is hinged, latched and padlockable.

APPLICATION

For use in applications requiring shallow depth, low-profile enclosures

FEATURES



-
- Low-profile design provides the perfect depth for smaller components while maintaining a large footprint to accommodate interior mounted antennae
 - Non-metallic material construction with optional ABS Back Panel to allow unimpeded transmission of wireless signals
 - Hinges do not penetrate enclosure
 - Easy to remove cover
 - High performance inserts
 - Integrated padlock hasp
 - Smooth Side Wall construction for easy fitting mounting and alignment
 - Molded in bosses for attachment of DIN rail
 - Molded-in Mounting Feet / Flange Provided
 - Single SKU with multiple cover attachment options
 - Back Panels Available for all sizes

General Information

| | |
|--|--|
| Color | Gray |
| Cover Type | Opaque |
| Mounting Type | Wall Mount |
| Material | Polycarbonate |
| Back Panel Screw Size | #10-32 x 3/8 |
| Back Panel Recommended Torque | 16-20 in-lbs |
| Back Panel Screw Material | Zinc Plated |
| Cover Screw Size | #10-32 x 5/8 |
| Cover Screw Recommended Torque | 20-24 in-lbs |
| Cover Screw Material | 304 SS |
| Mounting Flange Screw Size | 1/4-20 x 1/2 |
| Mounting Flange Screw Recommended Torque | 10-14 in-lbs |
| Installation Mounting Torque | 25-30 in-lbs Max |
| Metal Inserts | Brass |
| Hinge Material | Integral Polycarbonate |
| Latch Material | 316 SS |
| Gasket Material | Poured In Place (PIP) Polyurethane Seamless |
| Country of Origin | USA |

DIMENSIONS

| | |
|-------------------|-------|
| Height (in) | 20.0 |
| Width (in) | 16.0 |
| Depth (in) | 4.0 |
| Height (mm) | 508.0 |
| Width (mm) | 406.4 |
| Depth (mm) | 101.6 |
| Usable Depth (in) | 5.1 |
| Usable Depth (mm) | 130.6 |

STANDARDS

NEMA 10250; UL 50; UL 50e; cULus Listed File
UL508A #E319779

CSA Std. C22.2 cULus Listed File
#E319779

Type 1; 3R; 4; 4X; 12

IEC 60529; UL Listed IP66
#E362920

Temperature Range °F -40°F to +248°F

Temperature Range °C -40°C to +120°C

Flammability Rating UL94-5VA

Outdoor Exposure UL746c (f1) Rated

CE Certified