

Enclosures **PolySlim Series**

Polycarbonate Low Profile Enclosure 24 x 24 x 6 Inches PolySlim™ Series with Clear Cover and Stainless Steel Latches



**Catalog
Number**

PC242406CCSS

UPC

785928581526.0

List Price

\$1108.23

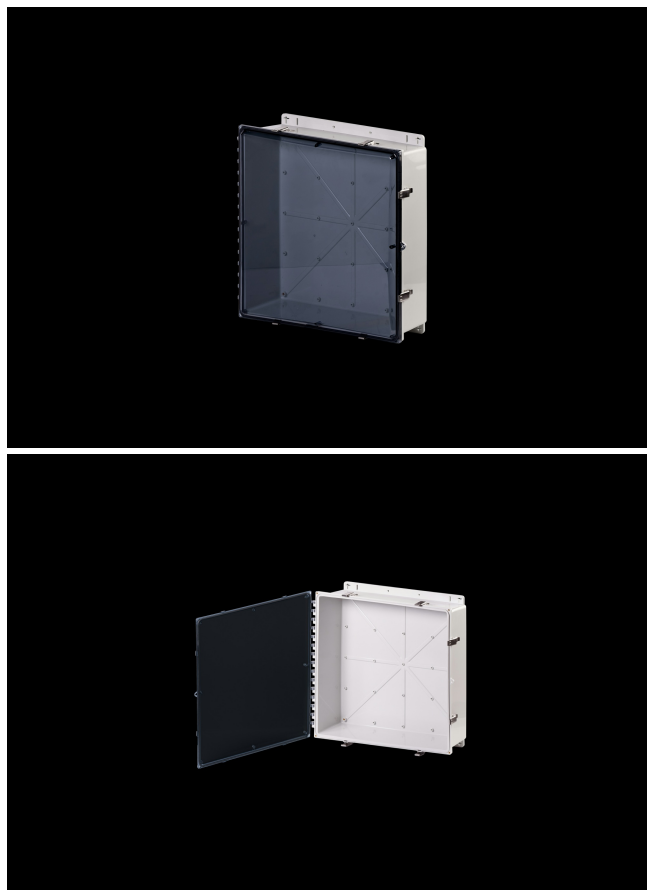
DESCRIPTION

24H X 24W X 6D Inches PolySlim™ Series polycarbonate enclosure is a high performance, shallow depth, polycarbonate enclosure applicable for heavy industrial conditions, but with a refined style suitable for commercial, industrial and OEM design applications. PolyStar Series enclosures are rain-tight and watertight rated for use in both interior and exterior applications. This "HPL" configuration features a clear cover with stainless steel latches that is hinged, latched and padlockable.

APPLICATION

For use in applications requiring shallow depth, low-profile enclosures

FEATURES



-
- Low-profile design provides the perfect depth for smaller components while maintaining a large footprint to accommodate interior mounted antennae
 - Non-metallic material construction with optional ABS Back Panel to allow unimpeded transmission of wireless signals
 - Hinges do not penetrate enclosure
 - Easy to remove cover
 - High performance inserts
 - Integrated padlock hasp
 - Smooth Side Wall construction for easy fitting mounting and alignment
 - Molded in bosses for attachment of DIN rail
 - Molded-in Mounting Feet / Flange Provided
 - Single SKU with multiple cover attachment options
 - Back Panels Available for all sizes

General Information

Color	Gray
Cover Type	Clear
Mounting Type	Wall Mount
Material	Polycarbonate
Back Panel Screw Size	#10-32 x 3/8
Back Panel Recommended Torque	16-20 in-lbs
Back Panel Screw Material	Zinc Plated
Cover Screw Size	#10-32 x 5/8
Cover Screw Recommended Torque	20-24 in-lbs
Cover Screw Material	304 SS
Mounting Flange Screw Size	1/4-20 x 1/2
Mounting Flange Screw Recommended Torque	10-14 in-lbs
Installation Mounting Torque	25-30 in-lbs Max
Metal Inserts	Brass
Hinge Material	Integral Polycarbonate
Latch Material	316 SS
Gasket Material	Poured In Place (PIP) Polyurethane Seamless
Country of Origin	USA

DIMENSIONS

Height (in)	24.0
Width (in)	24.0
Depth (in)	6.0
Height (mm)	609.6
Width (mm)	609.6
Depth (mm)	152.4
Usable Depth (in)	7.1
Usable Depth (mm)	179.8

STANDARDS

NEMA 10250; UL 50; UL 50e; cULus Listed File
UL508A #E319779

CSA Std. C22.2 cULus Listed File
#E319779

Type 1; 3R; 4; 4X; 12

IEC 60529; UL Listed IP66
#E362920

Temperature Range °F -40°F to +248°F

Temperature Range °C -40°C to +120°C

Flammability Rating UL94-5VA

Outdoor Exposure UL746c (f1) Rated

CE Certified