

Enclosures **Diamond Shield Series**

## Fiberglass Enclosure 8 x 8 x 4 Inches Diamond Shield Series with Window and Hinged, 2 Lockable Pull Latches Opaque Cover



**Catalog Number**

DSW80804HPL

**UPC**

785928907012.0

List Price

**\$0.00**

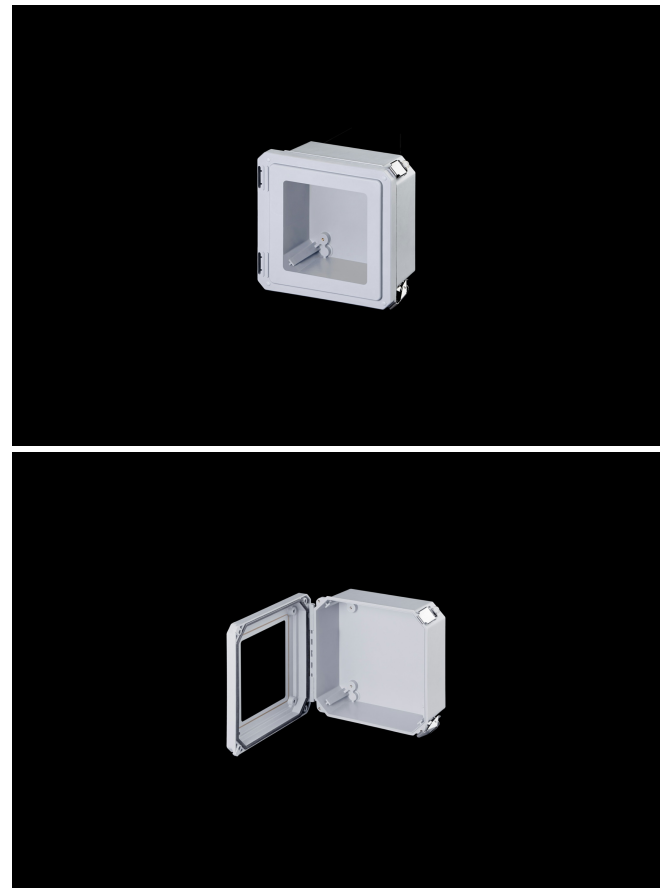
### DESCRIPTION

8H x 8W x 4D Inches Diamond Shield Series Fiberglass Enclosure with an "HPL" Flush Bonded Window Cover (Hinged, 2 Lockable Pull Latches) is designed for high-end electronics, harsh corrosive environments and industrial applications both indoors and outdoors. The series offers an additional feature of panel mounting in the cover for use as an operator interface in industrial equipment control stations where required.

### APPLICATION

Suited for high-end and harsh industrial applications

### FEATURES



- Flush Bonded Acrylic Window
- Maximum visibility to raised panels and control boxes
- High temperature; flame retardant; non corrosive; environmental designs
- Results in an environmentally sealed; environmentally sound space
- High impact resistance
- Double insulated material no incidental electrical contact
- Solid construction in a lightweight design
- UV resistant
- Manufactured with SolarGuard®, Stahlin's proprietary formulation of non-halogenated fiberglass, offering superior resistance to outdoor exposure, chemicals and flames.
- Back Panels Available for all sizes

## General Information

|  |  |
|--|--|
| Color                                  | Gray   |
| Cover Type                             | Window   |
| Material                               | Fiberglass                                     |
| Back Panel Screw Size                  | #10-32 x 3/8                                   |
| Back Panel Recommended Torque          | 16-20 in-lbs                                   |
| Back Panel Screw Material              | 304 SS   |
| Cover Screw Size                       | #10-32 x 1-1/4                                 |
| Cover Screw Recommended Torque         | 20-24 in-lbs                                   |
| Cover Screw Material                   | 304 SS   |
| Mounting Foot Screw Size               | #10-32 x 7/16                                  |
| Mounting Foot Screw Recommended Torque | 22-25 in-lbs                                   |
| Installation Mounting Torque           | 45 in-lbs Max                                  |
| Metal Inserts                          | Brass  |
| Hinge Material                         | 304 SS   |
| Latch Material                         | 304 SS   |
| Gasket Material                        | Poured In Place (PIP)<br>Polyurethane Seamless |
| Country of Origin                      | USA  |

## DIMENSIONS

|                   |       |
|-------------------|-------|
| Height (in)       | 8.0   |
| Width (in)        | 8.0   |
| Depth (in)        | 4.0   |
| Height (mm)       | 203.2 |
| Width (mm)        | 203.2 |
| Depth (mm)        | 101.6 |
| Usable Depth (in) | 3.5   |
| Usable Depth (mm) | 88.3  |

## STANDARDS

|                                   |                           |
|-----------------------------------|---------------------------|
| NEMA 10250; UL 50; UL 50e; UL508A | cULus Listed File #E64358 |
| CSA Std. C22.2                    | cULus Listed File #E64358 |
| Type                              | 1; 3; 3S; 4; 4X; 12; 13   |
| IEC 60529; UL Listed #E362920     | IP66                      |
| UL1741                            | UL Listed File #E333478   |
| Temperature Range °F              | -76°F to +274°F           |
| Temperature Range °C              | -60°C to +134°C           |
| Window Temperature Range °F       | -26°F to +170°F           |
| Window Temperature Range °C       | -32°C to +76°C            |
| Flammability Rating               | UL94-5VA                  |
| NFPA No. 101 Flame Spread         | Class A(1)                |
| Outdoor Exposure UL746c           | (f1) Rated                |
| CE                                | Certified                 |