

Enclosures **PushButton Series**

Polycarbonate Enclosure 4 x 3 x 2 Inches Push Button Series 1 Hole 22 mm with Opaque Lift Off Cover



**Catalog
Number**

CFPC1PB22

UPC

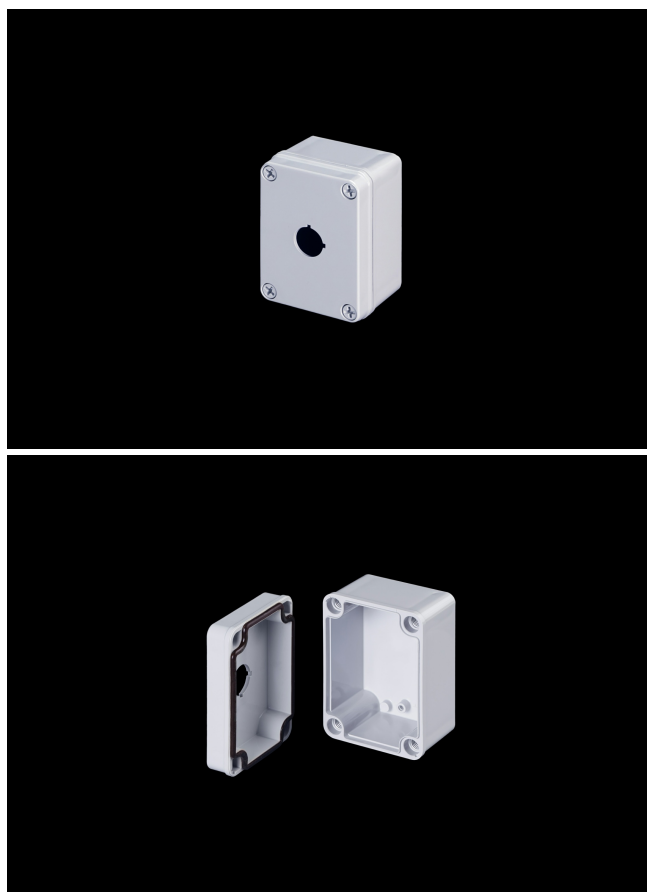
785928564673

DESCRIPTION

4H x 3W x 2D Inches Push Button Series Polycarbonate Enclosure is an in-line enclosures designed to be a true push button station and houses pushbuttons, switches and pilot lights in 22mm configurations. Designed for general electrical and electronic applications or any application that has associated environmental concerns. Custom hole configurations available upon request.

APPLICATION

- For use in many MRO and OEM applications
- Slim design allows easy installation of pushbuttons and switches in machine control applications with tight or dense space requirements
- Used in compact or portable control systems or for use as an Operator Interface Enclosure in both indoor and outdoor environments
- Used as general Junction Enclosures or termination point enclosures in an electrical system
- Used indoors or outdoors



FEATURES

- Memory retaining continuous polyurethane gasket
- Captive polymer cover screws
- Corrosion resistant polycarbonate
- Submersible; non corrosive; environmental design
- High Impact Resistance

General Information

Color	Gray
Cover Type	Push Button
Mounting Type	Wall Mount
Material	Polycarbonate
Cover Screw Size	Custom
Cover Screw Recommended Torque	16-20 in-lbs
Cover Screw Material	Polycarbonate
Installation Mounting Torque	25-30 in-lbs Max
Metal Inserts	
Gasket Material	Poured In Place (PIP) Polyurethane Seamless
Country of Origin	USA

DIMENSIONS

Height (in)	4.0
Width (in)	3.0
Depth (in)	2.0
Height (mm)	101.6
Width (mm)	76.2
Depth (mm)	50.8
Usable Depth (in)	2.5
Usable Depth (mm)	64.0

STANDARDS

NEMA 10250; UL 50; UL 50e; UL508A	cULus Listed File #E319779
CSA Std. C22.2	cULus Listed File #E319779
Type	1; 3R; 4; 4X; 6P; 12
IEC 60529; UL Listed #E362920	IP66; IP68
Temperature Range °F	-40°F to +248°F
Temperature Range °C	-40°C to +120°C
Flammability Rating	UL94-5VA
Outdoor Exposure UL746c	(f1) Rated
CE	Certified