

Enclosures **JW Series**

## Fiberglass Enclosure 16 x 14 x 6 Inches J Series with Window and Hinged, Latched Opaque Cover



**Catalog Number**

**JW1614HPL**

**UPC**

**785928341281.0**

List Price

**\$661.57**

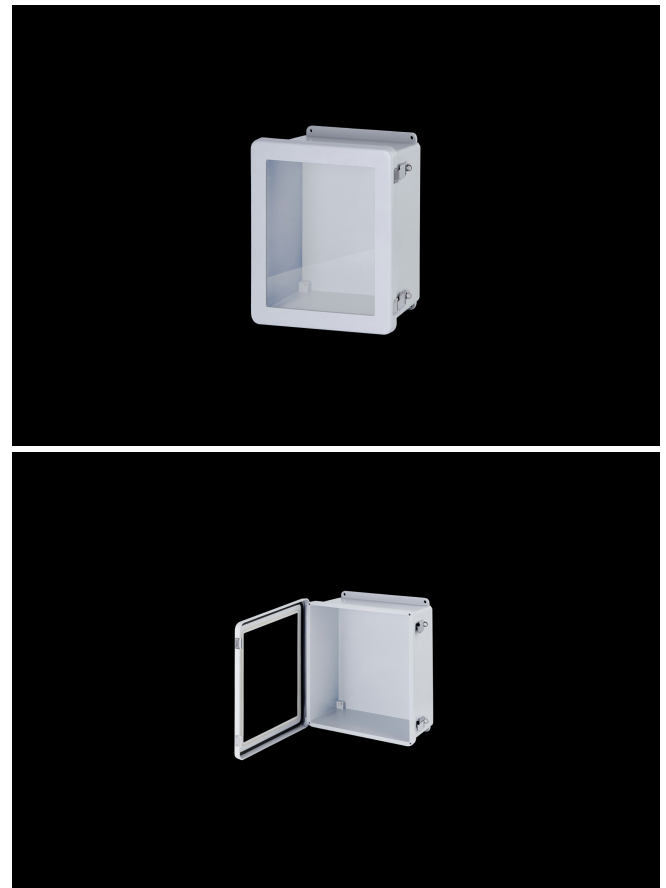
### DESCRIPTION

16H x 14W x 6D Inches J Series Fiberglass Enclosure with an "HPL" Flush Bonded Window Cover (Hinged, Padlock Latches) is designed for general electrical and electronic applications. Simple in its design, the enclosure can be configured with modifications such as cutouts and windows. Featuring a modest overhand cover on a flange mounted base, they offer unobstructed side-walls, built in mounting capabilities and a protective wrap around cover. J Series Products enhance any instrument installation.

### APPLICATION

Industrial enclosure for harsh; aggressive environments

### FEATURES



- Flush-Bonded Window Cover
- Increased wall thickness vs. competitive models offers structural support and prevents potential water ingress
- Integral mounting flange vs. mounting feet (no assembly required)
- Molded-in inserts provide added pull-out strength
- Overhang cover on smooth sided base
- High temperature; flame retardant; non-corrosive
- All stainless hardware latches and screws
- Full-length; stainless-steel hinge
- Chemically resistant; fiberglass reinforced polyester
- Non-corrosive; environmental designs
- Stainless steel retention chain on screw covers
- Continuous polyurethane gasket
- Manufactured with SolarGuard®, Stahlin's proprietary formulation of non-halogenated fiberglass, offering superior resistance to outdoor exposure, chemicals and flames.
- Back Panels Available for all sizes

## General Information

|                               |  |
|-------------------------------|--|
| Color                         | Gray   |
| Cover Type                    | Window   |
| Material                      | Fiberglass                                     |
| Back Panel Screw Size         | #10-32 x 3/8                                   |
| Back Panel Recommended Torque | 16-20 in-lbs                                   |
| Back Panel Screw Material     | 304 SS   |
| Installation Mounting Torque  | 45 in-lbs Max                                  |
| Metal Inserts                 | Brass  |
| Hinge Material                | 304 SS   |
| Latch Material                | 304 SS   |
| Gasket Material               | Poured In Place (PIP)<br>Polyurethane Seamless |
| Country of Origin             | USA  |

## DIMENSIONS

---

|                   |       |
|-------------------|-------|
| Height (in)       | 17.5  |
| Width (in)        | 15.5  |
| Depth (in)        | 6.2   |
| Height (mm)       | 445.3 |
| Width (mm)        | 392.7 |
| Depth (mm)        | 157.7 |
| Usable Depth (in) | 5.4   |
| Usable Depth (mm) | 136.0 |

## STANDARDS

---

|                                   |                           |
|-----------------------------------|---------------------------|
| NEMA 10250; UL 50; UL 50e; UL508A | cULus Listed File #E64358 |
| CSA Std. C22.2                    | cULus Listed File #E64358 |
| Type                              | 1; 3R; 4; 4X; 6P; 12      |
| IEC 60529; UL Listed #E362920     | IP66                      |
| UL1741                            | UL Listed File #E333478   |
| Plenum Space UL2043               | Compliant                 |
| Temperature Range °F              | -76°F to +274°F           |
| Temperature Range °C              | -60°C to +134°C           |
| Window Temperature Range °F       | -26°F to +170°F           |
| Window Temperature Range °C       | -32°C to +76°C            |
| Flammability Rating               | UL94-5VA                  |
| NFPA No. 101 Flame Spread         | Class A(1)                |
| Outdoor Exposure UL746c           | (f1) Rated                |
| CE                                | Certified                 |