

Enclosures **PolySlim Series**

## **Polycarbonate Low Profile Enclosure 12 x 10 x 4 Inches PolySlim™ Series HW Opaque Screw Down Cover without Latches**



**Catalog  
Number**

**PC121004HW**

**UPC**

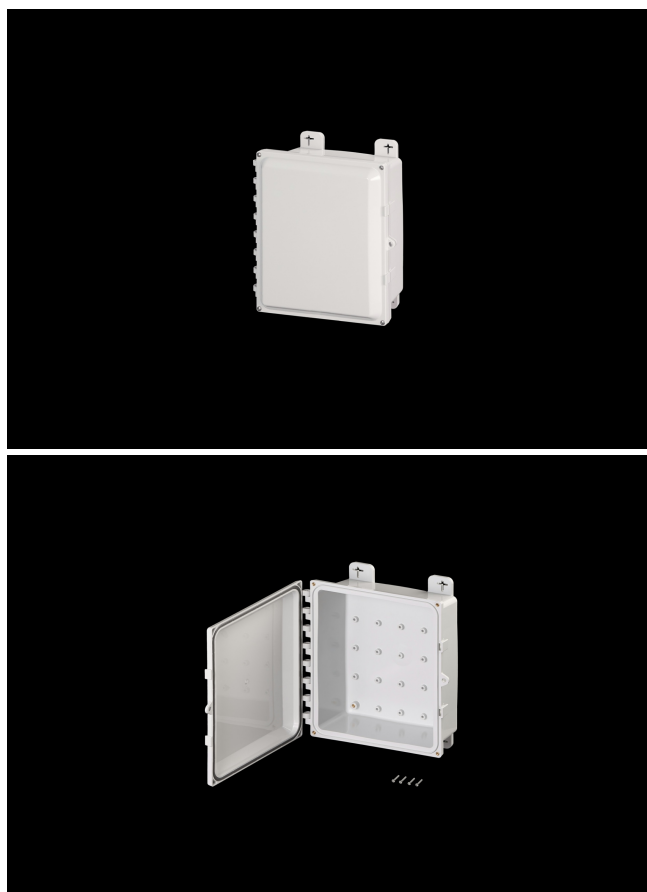
**785928582899**

### **DESCRIPTION**

12H X 10W X 4D Inches PolySlim™ Series is a high performance, shallow depth, polycarbonate enclosure applicable for heavy industrial conditions, but with a refined style suitable for commercial, industrial and OEM design applications. PolyStar Series enclosures are rain-tight and watertight rated for use in both interior and exterior applications. This "HW" configuration features a screw down opaque cover without latches which is hinged and padlockable.

### **APPLICATION**

- For use in applications requiring shallow depth, low-profile enclosures
- Ideal for housing wireless access points, remote monitoring, and low-profile electrical control applications.
- Suitable for heavy industrial; commercial; and OEM applications
- Used to house electrical and electronic controls; instruments; and components
- Used indoors or outdoors



- Used in highly corrosive areas
- Provides protection against rain; sleet; snow; splashing water; hose-directed water; submersion; sun/UV and flame protection.

## FEATURES

---

- Low-profile design provides the perfect depth for smaller components while maintaining a large footprint to accommodate interior mounted antennae
- Hinges do not penetrate enclosure
- Easy to remove cover
- High performance inserts
- Integrated padlock hasp
- Smooth Side Wall construction for easy fitting mounting and alignment
- Back Panels Available for all sizes
- Molded in bosses for attachment of DIN rail
- Molded-in Mounting Feet / Flange Provided

## General Information

Color	Gray
Cover Type	Opaque
Mounting Type	Wall Mount
Material	Polycarbonate
Back Panel Screw Size	#10-32 x 3/8
Back Panel Recommended Torque	16-20 in-lbs
Back Panel Screw Material	Zinc Plated
Cover Screw Size	#10-32 x 5/8
Cover Screw Recommended Torque	20-24 in-lbs
Cover Screw Material	304 SS
Mounting Flange Screw Size	1/4-20 x 1/2
Mounting Flange Screw Recommended Torque	10-14 in-lbs
Installation Mounting Torque	25-30 in-lbs Max
Metal Inserts	Brass
Hinge Material	Integral Polycarbonate
Gasket Material	Poured In Place (PIP) Polyurethane Seamless
Country of Origin	USA

## DIMENSIONS

Height (in)	12.0
Width (in)	10.0
Depth (in)	4.0
Height (mm)	305.0
Width (mm)	254.0
Depth (mm)	102.0

## STANDARDS

NEMA 10250; UL 50; UL 50e; UL508A	cULus Listed File #E319779
CSA Std. C22.2	cULus Listed File #E319779
Type	1; 3R; 4; 4X; 6P; 12
IEC 60529; UL Listed #E362920	IP66; IP68
Temperature Range °F	-40°F to +248°F
Temperature Range °C	-40°C to +120°C
Flammability Rating	UL94-5VA
Outdoor Exposure UL746c	(f1) Rated
CE	Certified