

Enclosures **PolyStar Series**

## Polycarbonate Enclosure 14 x 12 x 6 Inches PolyStar Series Opaque Cover with Weight Distribution Shelf



**Catalog Number**

PCWD1412

**UPC**

785928580253.0

List Price

**\$335.98**

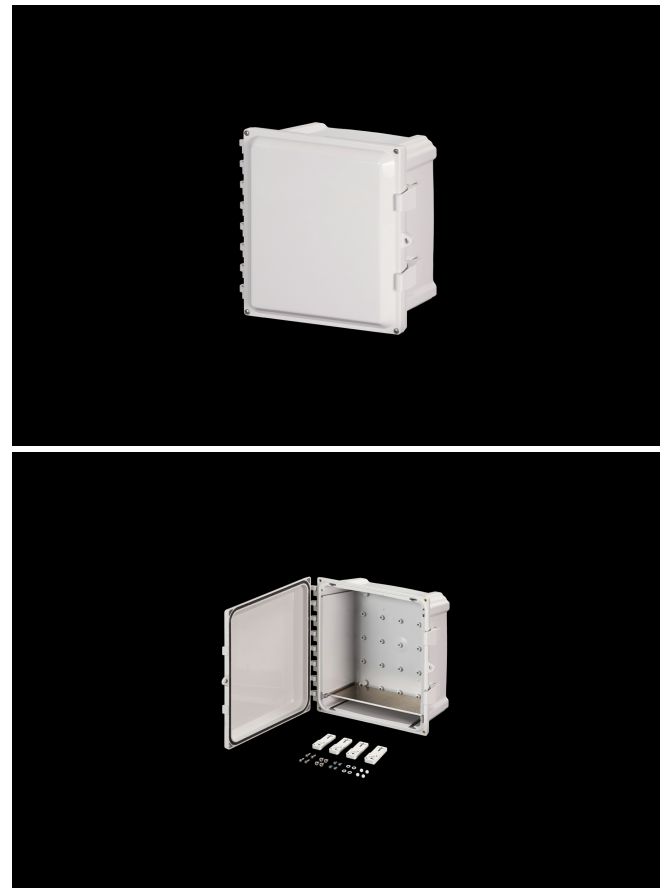
### DESCRIPTION

14H x 12W x 6D Inches PolyStar™ Series polycarbonate enclosure with weight distribution shelf provides an extremely rugged support system when adding heavy equipment in polycarbonate enclosures. Ideal for support when adding a power supply, battery, or heavy equipment which could potentially deflect the enclosure bottom wall. Features an opaque cover which is hinged, latched and padlockable.

### APPLICATION

Suitable for heavy industrial; commercial; and OEM applications. Includes a Weight Distribution Shelf which provides an extremely rugged support system when adding heavy equipment in non-metallic enclosures.

### FEATURES



- Includes weight distribution shelf for mounting of heavy equipment inside the enclosure and eliminates risk of bottom wall deflection
- Easy to remove lid
- High performance inserts
- Integrated padlock hasp
- Flush-fit side mount swing panel and DIN rail system
- Molded in bosses
- Back Panels Available for all sizes
- Robust Mounting Feet Included
- Single SKU with multiple cover attachment options

## General Information

Color	Gray
Cover Type	Opaque
Material	Polycarbonate
Back Panel Screw Size	#10-32 x 3/8
Back Panel Recommended Torque	16-20 in-lbs
Back Panel Screw Material	Zinc Plated
Cover Screw Size	#10-32 x 5/8
Cover Screw Recommended Torque	20-24 in-lbs
Cover Screw Material	304 SS
Mounting Flange Screw Size	1/4-20 x 1/2
Mounting Flange Screw Recommended Torque	10-14 in-lbs
Installation Mounting Torque	25-30 in-lbs Max
Metal Inserts	Brass
Hinge Material	Integral Polycarbonate
Latch Material	Polycarbonate
Gasket Material	Poured In Place (PIP) Polyurethane Seamless
Country of Origin	USA

## DIMENSIONS

---

Height (in)	14.0
Width (in)	12.0
Depth (in)	6.0
Height (mm)	356.0
Width (mm)	305.0
Depth (mm)	152.0
Usable Depth (in)	6.6
Usable Depth (mm)	167.0

## STANDARDS

---

NEMA 10250; UL 50; UL 50e; UL508A	cULus Listed File #E319779
CSA Std. C22.2	cULus Listed File #E319779
Type	1; 3R; 4; 4X; 6P; 12
IEC 60529; UL Listed #E362920	IP66; IP68
Temperature Range °F	-40°F to +248°F
Temperature Range °C	-40°C to +120°C
Flammability Rating	UL94-5VA
Outdoor Exposure UL746c	(f1) Rated
CE	Certified