

Enclosures **J Series**

## Fiberglass Enclosure 12 x 10 x 5 Inches J Series with Hinged, Twist Latch Opaque Cover



**Catalog  
Number**

**J1210HLL**

**UPC**

**785928109201**

List Price

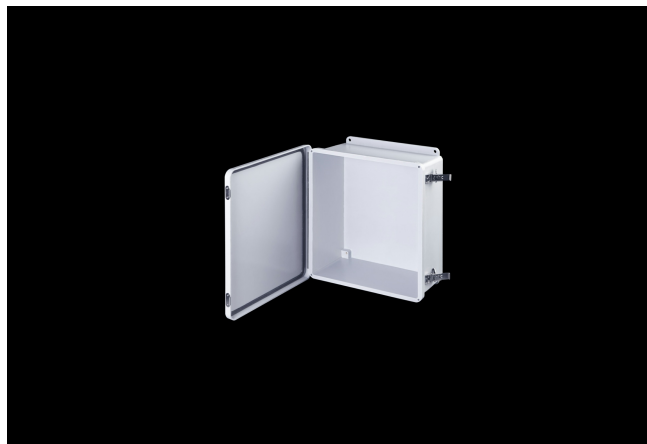
**\$271.68**

### DESCRIPTION

12H x 10W x 5D Inches J Series Fiberglass Enclosure with an "HLL" Opaque Cover (Hinged, Twist Latches) is designed for general electrical and electronic applications. Simple in its design, the enclosure can be configured with modifications such as cutouts and windows. Featuring a modest overhand cover on a flange mounted base, they offer unobstructed side-walls, built in mounting capabilities and a protective wrap around cover. J Series Products enhance any instrument installation.

### APPLICATION

- Industrial enclosure for harsh; aggressive environments
- Designed for general electrical and electronic applications; and any application that has associated environmental concerns



- Can be configured with cutouts; windows; and modifications that make the finished product truly unique
- Enhance any instrument installation and accommodate standard back-panel mounting

## FEATURES

---

- Increased wall thickness vs. competitive models offers structural support and prevents potential water ingress
- Integral mounting flange vs. mounting feet (no assembly required)
- Molded-in inserts provide added pull-out strength
- Opaque Cover
- Overhang cover on smooth sided base
- High temperature; flame retardant; non-corrosive
- All stainless hardware latches and screws
- Full-length; stainless-steel hinge
- Chemically resistant; fiberglass reinforced polyester
- Non-corrosive; environmental designs
- Stainless steel retention chain on screw covers
- Continuous polyurethane gasket
- Manufactured with SolarGuard®, Stahlin's proprietary formulation of non-halogenated fiberglass, offering superior resistance to outdoor exposure, chemicals and flames.
- Back Panels Available for all sizes

## General Information

|                               |  |
|-------------------------------|--|
| Color                         | Gray   |
| Cover Type                    | Opaque   |
| Mounting Type                 | Wall Mount                                     |
| Material                      | Fiberglass                                     |
| Back Panel Screw Size         | #10-32 x 3/8                                   |
| Back Panel Recommended Torque | 16-20 in-lbs                                   |
| Back Panel Screw Material     | 304 SS   |
| Installation Mounting Torque  | 45 in-lbs Max                                  |
| Metal Inserts                 | Brass  |
| Hinge Material                | 304 SS   |
| Latch Material                | 304 SS   |
| Gasket Material               | Poured In Place (PIP)<br>Polyurethane Seamless |
| Country of Origin             | USA  |

## DIMENSIONS

|                   |       |
|-------------------|-------|
| Height (in)       | 13.6  |
| Width (in)        | 11.4  |
| Depth (in)        | 5.2   |
| Height (mm)       | 344.4 |
| Width (mm)        | 290.3 |
| Depth (mm)        | 132.6 |
| Usable Depth (in) | 4.5   |
| Usable Depth (mm) | 114.0 |

## STANDARDS

---

NEMA 10250; UL 50; UL 50e; cULus Listed File  
UL508A #E64358

CSA Std. C22.2 cULus Listed File  
#E64358

Type 1; 3R; 4; 4X; 6P; 12

IEC 60529; UL Listed IP66  
#E362920

UL1741 UL Listed File #E333478

Plenum Space UL2043 Compliant

Temperature Range °F -76°F to +274°F

Temperature Range °C -60°C to +134°C

IEC 62262 Impact Rating IK10 per File #E362920  
Listed

Flammability Rating UL94-5VA

NFPA No. 101 Flame Spread Class A(1)

Outdoor Exposure UL746c (f1) Rated

CE Certified