

Enclosures **PolyStar Series**

Polycarbonate Enclosure 12 x 10 x 6 Inches PolyStar Series Opaque Cover with Weight Distribution Shelf



Catalog Number

PCWD1210

UPC

785928580246.0

List Price

\$292.25

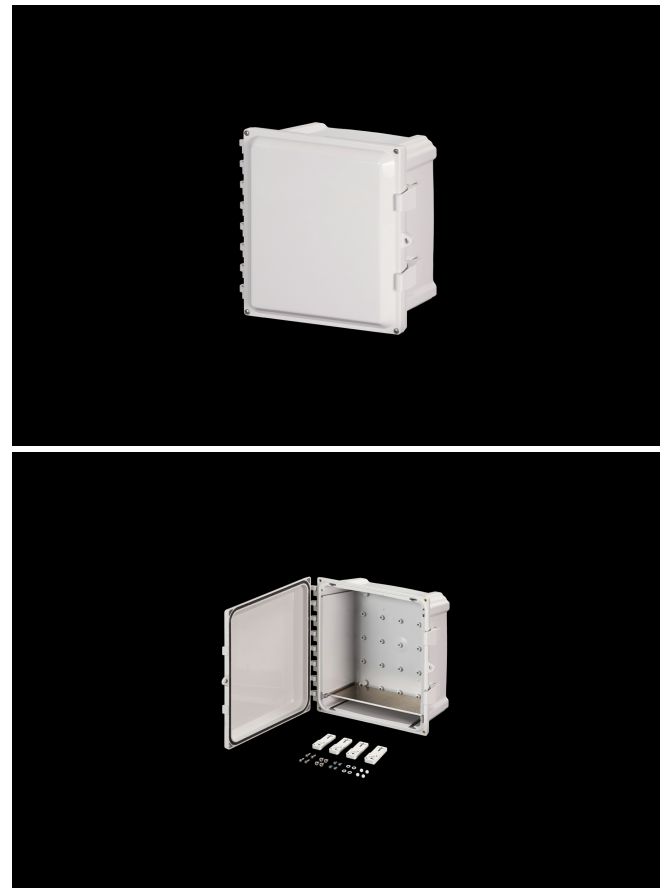
DESCRIPTION

12H x 10W x 6D Inches PolyStar™ Series polycarbonate enclosure with weight distribution shelf provides an extremely rugged support system when adding heavy equipment in polycarbonate enclosures. Ideal for support when adding a power supply, battery, or heavy equipment which could potentially deflect the enclosure bottom wall. Features an opaque cover which is hinged, latched and padlockable.

APPLICATION

Suitable for heavy industrial; commercial; and OEM applications. Includes a Weight Distribution Shelf which provides an extremely rugged support system when adding heavy equipment in non-metallic enclosures.

FEATURES



- Includes weight distribution shelf for mounting of heavy equipment inside the enclosure and eliminates risk of bottom wall deflection
- Easy to remove lid
- High performance inserts
- Integrated padlock hasp
- Flush-fit side mount swing panel and DIN rail system
- Molded in bosses
- Back Panels Available for all sizes
- Robust Mounting Feet Included
- Single SKU with multiple cover attachment options

General Information

Color	Gray
Cover Type	Opaque
Material	Polycarbonate
Back Panel Screw Size	#10-32 x 3/8
Back Panel Recommended Torque	16-20 in-lbs
Back Panel Screw Material	Zinc Plated
Cover Screw Size	#10-32 x 5/8
Cover Screw Recommended Torque	20-24 in-lbs
Cover Screw Material	304 SS
Mounting Flange Screw Size	1/4-20 x 1/2
Mounting Flange Screw Recommended Torque	10-14 in-lbs
Installation Mounting Torque	25-30 in-lbs Max
Metal Inserts	Brass
Hinge Material	Integral Polycarbonate
Latch Material	Polycarbonate
Gasket Material	Poured In Place (PIP) Polyurethane Seamless
Country of Origin	USA

DIMENSIONS

Height (in)	12.0
Width (in)	10.0
Depth (in)	6.0
Height (mm)	305.0
Width (mm)	254.0
Depth (mm)	152.0
Usable Depth (in)	6.6
Usable Depth (mm)	167.0

STANDARDS

NEMA 10250; UL 50; UL 50e; UL508A	cULus Listed File #E319779
CSA Std. C22.2	cULus Listed File #E319779
Type	1; 3R; 4; 4X; 6P; 12
IEC 60529; UL Listed #E362920	IP66; IP68
Temperature Range °F	-40°F to +248°F
Temperature Range °C	-40°C to +120°C
Flammability Rating	UL94-5VA
Outdoor Exposure UL746c	(f1) Rated
CE	Certified