

Enclosures **PushButton Series**

## **Polycarbonate Enclosure 4 x 3 x 2 Inches Push Button Series 1 Hole 22 mm with Yellow Lift Off Cover and Black Base**



**Catalog  
Number**

**YW-CFPC1PB22**

**UPC**

**785928575150**

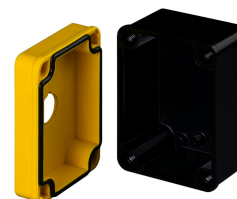
### **DESCRIPTION**

4H x 3W x 2D Inches Push Button Series Yellow Fiberglass Enclosure is an in-line enclosures designed to be a true push button station and houses pushbuttons, switches and pilot lights in 22mm configurations. Designed for general electrical and electronic applications or any application that has associated environmental concerns. Features a black base with a yellow lift off cover.



### **APPLICATION**

- For use in many MRO and OEM applications
- Slim design allows easy installation of pushbuttons and switches in machine control applications with tight or dense space requirements
- Used in compact or portable control systems or for use as an Operator Interface Enclosures in both indoor and outdoor environments
- These unique in-line enclosures house pushbuttons; switches and pilot lights in both 30mm and 22mm configurations



- Used indoors or outdoors
- Yellow cover complies with need for E-STOP applications.

## FEATURES

---

- Memory retaining continuous polyurethane gasket
- Captive polymer cover screws
- Corrosion resistant polycarbonate
- Submersible; non corrosive; environmental design
- High Impact Resistance
- High visibility safety yellow cover

## General Information

---

|                                |  |
|--------------------------------|--|
| Color                          | Yellow   |
| Cover Type                     | Push Button                                    |
| Mounting Type                  | Wall Mount                                     |
| Material                       | Polycarbonate                                  |
| Cover Screw Size               | Custom   |
| Cover Screw Recommended Torque | 16-20 in-lbs                                   |
| Cover Screw Material           | Polycarbonate                                  |
| Installation Mounting Torque   | 25-30 in-lbs Max                               |
| Metal Inserts                  |  |
| Gasket Material                | Poured In Place (PIP)<br>Polyurethane Seamless |
| Country of Origin              | USA  |

## DIMENSIONS

|                   |       |
|-------------------|-------|
| Height (in)       | 4.0   |
| Width (in)        | 3.0   |
| Depth (in)        | 2.0   |
| Height (mm)       | 101.6 |
| Width (mm)        | 76.2  |
| Depth (mm)        | 50.8  |
| Usable Depth (in) | 2.5   |
| Usable Depth (mm) | 64.0  |

## STANDARDS

|                                   |                            |
|-----------------------------------|----------------------------|
| NEMA 10250; UL 50; UL 50e; UL508A | cULus Listed File #E319779 |
| CSA Std. C22.2                    | cULus Listed File #E319779 |
| Type                              | 1; 3R; 4; 4X; 6P; 12       |
| IEC 60529; UL Listed #E362920     | IP66; IP68                 |
| Temperature Range °F              | -40°F to +248°F            |
| Temperature Range °C              | -40°C to +120°C            |
| Flammability Rating               | UL94-5VA                   |
| Outdoor Exposure UL746c           | (f1) Rated                 |
| CE                                | Certified                  |