

Enclosures **PolyStar Series**

## Polycarbonate Enclosure 12 x 10 x 6 Inches PolyStar Series with Opaque Cover and Flange Kit



**Catalog  
Number**

**PCF1210**

**UPC**

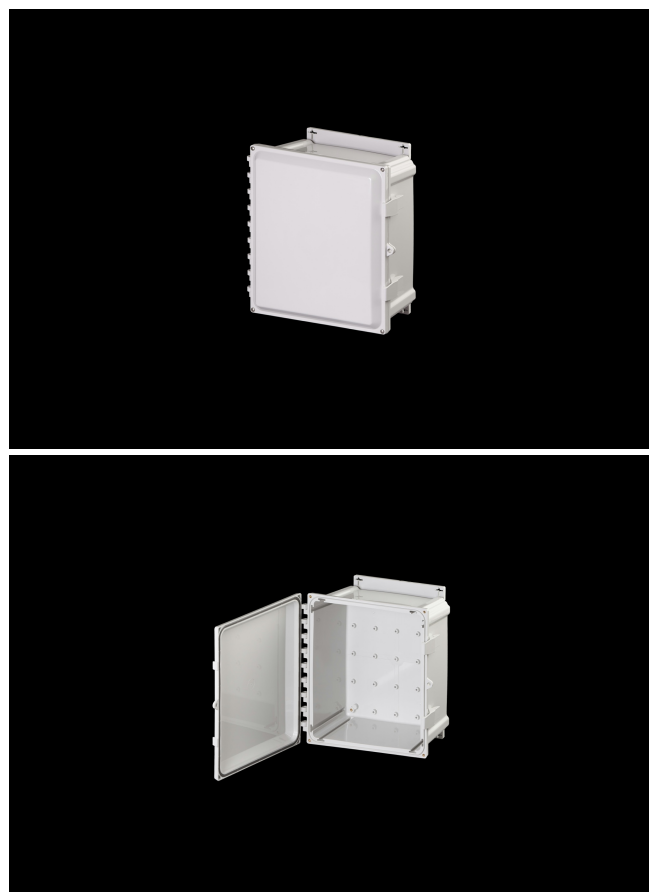
**785928580475**

### DESCRIPTION

12H x 10W x 6D Inches PolyStar™ Series polycarbonate enclosure with mounting flanges are designed as a robust mounting option. They are ideal for non-hazardous industrial and commercial applications and are commonly used in electrical control, measurement and monitoring, security, oil and gas, manufacturing, and communications. They feature an innovative mounting cross which allows for multiple screw positions. Additionally, the flange can be mounted on the top and bottom, or sides of the enclosure. They feature a water-shedding flange design contains a built-in radius to prevent accumulation of water. It features an opaque cover which is hinged, latched and padlockable.

### APPLICATION

- Suitable for heavy industrial; commercial; and OEM applications
- Used to house electrical and electronic controls;



instruments; and components

- Used indoors or outdoors
- Used in highly corrosive areas
- Provides protection against rain; sleet; snow; splashing water; hose-directed water; submersion; sun/UV and flame protection.

## FEATURES

---

- Latches and hinges do not penetrate enclosure
- Easy to remove lid
- High performance inserts
- Integrated padlock hasp
- Flush-fit side mount swing panel and DIN rail system
- Molded in bosses
- Robust Mounting Flange Included
- Single SKU with multiple cover attachment options
- Back Panels Available for all sizes

## General Information

|  |  |
|--|--|
| Color                                    | Gray   |
| Cover Type                               | Opaque   |
| Mounting Type                            | Wall Mount                                     |
| Material                                 | Polycarbonate                                  |
| Back Panel Screw Size                    | #10-32 x 3/8                                   |
| Back Panel Recommended Torque            | 16-20 in-lbs                                   |
| Back Panel Screw Material                | Zinc Plated                                    |
| Cover Screw Size                         | #10-32 x 5/8                                   |
| Cover Screw Recommended Torque           | 20-24 in-lbs                                   |
| Cover Screw Material                     | 304 SS   |
| Mounting Flange Screw Size               | 1/4-20 x 1/2                                   |
| Mounting Flange Screw Recommended Torque | 10-14 in-lbs                                   |
| Installation Mounting Torque             | 25-30 in-lbs Max                               |
| Metal Inserts                            | Brass  |
| Hinge Material                           | Integral Polycarbonate                         |
| Latch Material                           | Polycarbonate                                  |
| Gasket Material                          | Poured In Place (PIP)<br>Polyurethane Seamless |
| Country of Origin                        | USA  |

## DIMENSIONS

|                   |       |
|-------------------|-------|
| Height (in)       | 12.0  |
| Width (in)        | 10.0  |
| Depth (in)        | 6.0   |
| Height (mm)       | 305.0 |
| Width (mm)        | 254.0 |
| Depth (mm)        | 152.0 |
| Usable Depth (in) | 6.6   |
| Usable Depth (mm) | 167.0 |

## STANDARDS

|                                   |                            |
|-----------------------------------|----------------------------|
| NEMA 10250; UL 50; UL 50e; UL508A | cULus Listed File #E319779 |
| CSA Std. C22.2                    | cULus Listed File #E319779 |
| Type                              | 1; 3R; 4; 4X; 6P; 12       |
| IEC 60529; UL Listed #E362920     | IP66; IP68                 |
| Temperature Range °F              | -40°F to +248°F            |
| Temperature Range °C              | -40°C to +120°C            |
| Flammability Rating               | UL94-5VA                   |
| Outdoor Exposure UL746c           | (f1) Rated                 |
| CE                                | Certified                  |