

Enclosures **PushButton Series**

## **Fiberglass Enclosure 6 x 4 x 4 Inches Push Button Series 1 Hole 22 mm Opaque Lift Off Cover**



**Catalog  
Number**

**CF1PB22**

**UPC**

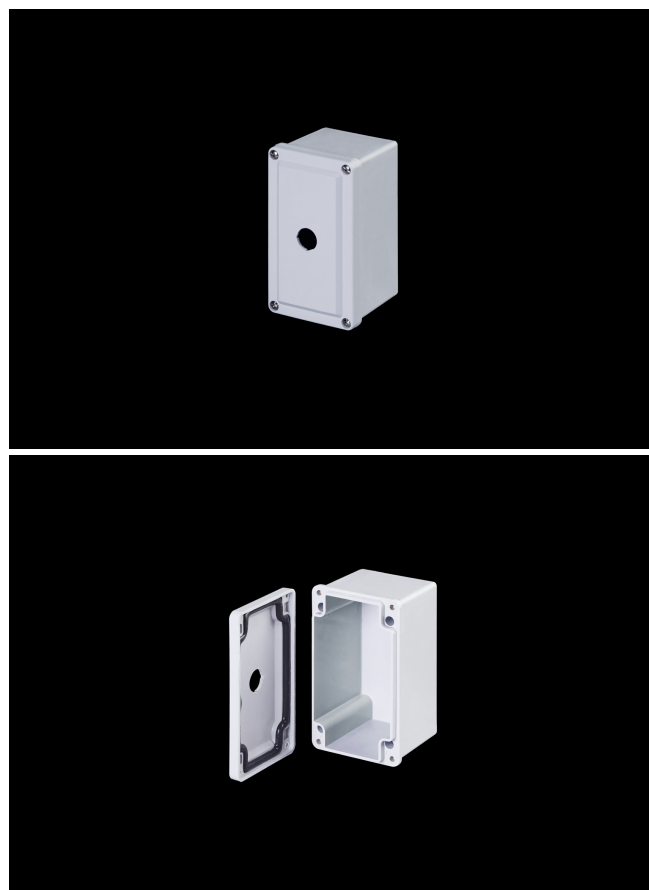
**785928200212**

### **DESCRIPTION**

6H x 4W x 4D Inches Push Button Series Fiberglass Enclosure is an in-line enclosures designed to be a true push button station and houses pushbuttons, switches and pilot lights in 22mm configurations. Designed for general electrical and electronic applications or any application that has associated environmental concerns. Custom hole configurations available upon request.

### **APPLICATION**

- For use in many MRO and OEM applications
- Slim design allows easy installation of pushbuttons and switches in machine control applications with tight or dense space requirements
- Used in compact or portable control systems or for use as an Operator Interface Enclosure in both indoor and outdoor environments
- Used as general Junction Enclosures or termination point enclosures in an electrical system
- Used indoors or outdoors



## FEATURES

---

- Memory retaining continuous polyurethane gasket
- Captive stainless steel cover screws
- Chemically resistant fiberglass reinforced polyester
- Submersible; non corrosive; environmental design
- High Impact Resistance
- Manufactured with SolarGuard®, Stahlin's proprietary formulation of non-halogenated fiberglass, offering superior resistance to outdoor exposure, chemicals and flames.

## General Information

---

Color	Gray
Cover Type	Push Button
Mounting Type	Wall Mount
Material	Fiberglass
Cover Screw Size	#10-24 x 3/4
Cover Screw Recommended Torque	20-24 in-lbs
Cover Screw Material	304 SS
Installation Mounting Torque	45 in-lbs Max
Metal Inserts	Brass
Gasket Material	Poured In Place (PIP) Polyurethane Seamless
Country of Origin	USA

## DIMENSIONS

Height (in)	6.0
Width (in)	4.0
Depth (in)	4.0
Height (mm)	152.4
Width (mm)	101.6
Depth (mm)	101.6
Usable Depth (in)	3.6
Usable Depth (mm)	92.0

## STANDARDS

NEMA 10250; UL 50; UL 50e; UL508A	cULus Listed File #E64358
CSA Std. C22.2	cULus Listed File #E64358
Type	1; 3R; 4; 4X; 6P; 12
IEC 60529; UL Listed #E362920	IP66; IP67; IP68
UL1741	UL Listed File #E333478
Plenum Space UL2043	Compliant
Temperature Range °F	-76°F to +274°F
Temperature Range °C	-60°C to +134°C
Flammability Rating	UL94-5VA
NFPA No. 101 Flame Spread	Class A(1)
Outdoor Exposure UL746c	(f1) Rated
CE	Certified