

Enclosures **PolyStar Series**

## Polycarbonate Enclosure 10 x 10 x 6 Inches PolyStar Series with Hinged, Opaque Cover and Stainless Steel Latches



**Catalog Number**

PC1010SS

**UPC**

785928574399.0

List Price

**\$215.55**

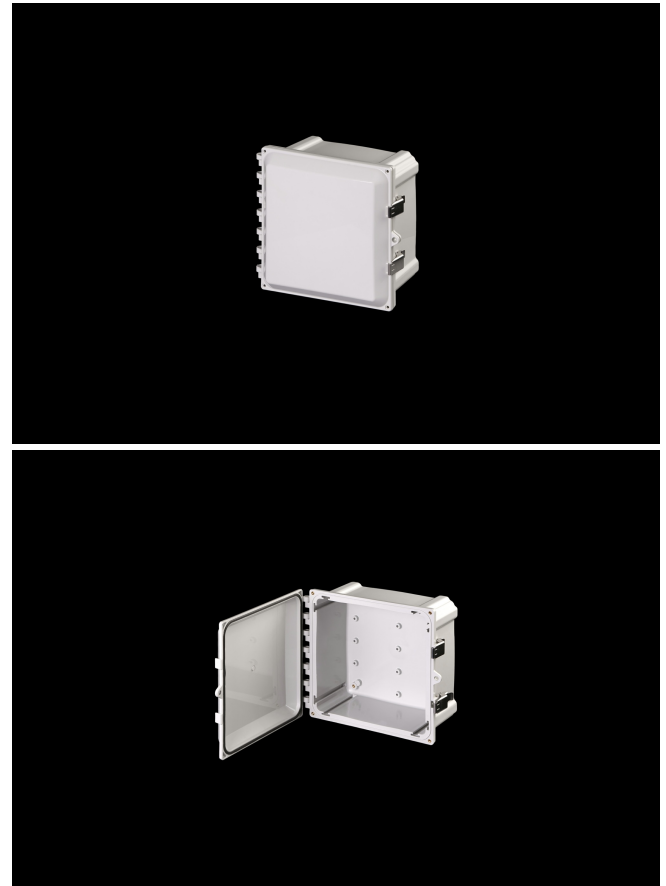
### DESCRIPTION

10H x 10W x 6D inches PolyStar Polycarbonate Enclosure with an Opaque Cover Configuration with Stainless Steel Latches (Hinged, Latched, Padlockable) are designed for outdoor and indoor applications. They carry an "F1" Rating per UL 746C, passing all tests for UV exposure and water immersion. PolyStar enclosures are self-extinguishing, non-halogenated and non-flame propagating.

### APPLICATION

Suitable for heavy industrial; commercial; and OEM applications

### FEATURES



- Latches and hinges do not penetrate enclosure
- Easy to remove lid
- High performance inserts
- Integrated padlock hasp
- Flush-fit side mount swing panel and DIN rail system
- Molded in bosses
- Multi-directional mounting feet
- Single SKU with multiple cover attachment options
- Back Panels Available for all sizes

## General Information

|  |  |
|--|--|
| Color                                  | Gray   |
| Cover Type                             | Opaque   |
| Material                               | Polycarbonate                                  |
| Back Panel Screw Size                  | #10-32 x 3/8                                   |
| Back Panel Recommended Torque          | 16-20 in-lbs                                   |
| Back Panel Screw Material              | Zinc Plated                                    |
| Cover Screw Size                       | #10-32 x 5/8                                   |
| Cover Screw Recommended Torque         | 20-24 in-lbs                                   |
| Cover Screw Material                   | 304 SS   |
| Mounting Foot Screw Size               | 1/4-20 x 1/2                                   |
| Mounting Foot Screw Recommended Torque | 10-14 in-lbs                                   |
| Installation Mounting Torque           | 25-30 in-lbs Max                               |
| Metal Inserts                          | Brass  |
| Hinge Material                         | Integral Polycarbonate                         |
| Latch Material                         | 316 SS   |
| Gasket Material                        | Poured In Place (PIP)<br>Polyurethane Seamless |
| Country of Origin                      | USA  |

## DIMENSIONS

---

|                   |       |
|-------------------|-------|
| Height (in)       | 10.0  |
| Width (in)        | 10.0  |
| Depth (in)        | 6.0   |
| Height (mm)       | 254.0 |
| Width (mm)        | 254.0 |
| Depth (mm)        | 152.4 |
| Usable Depth (in) | 5.7   |
| Usable Depth (mm) | 144.0 |

## STANDARDS

---

|                                   |                            |
|-----------------------------------|----------------------------|
| NEMA 10250; UL 50; UL 50e; UL508A | cULus Listed File #E319779 |
| CSA Std. C22.2                    | cULus Listed File #E319779 |
| Type                              | 1; 3R; 4; 4X; 6P; 12       |
| IEC 60529; UL Listed #E362920     | IP66; IP68                 |
| Temperature Range °F              | -40°F to +248°F            |
| Temperature Range °C              | -40°C to +120°C            |
| Flammability Rating               | UL94-5VA                   |
| Outdoor Exposure UL746c           | (f1) Rated                 |
| CE                                | Certified                  |