

Enclosures **Classic Series**

## Fiberglass Enclosure 15 x 13 x 7 Inches Classic Series with Window and Hinged, Padlockable Latch Cover



**Catalog Number**

CLW1513HPL

**UPC**

785928011207.0

List Price

**\$0.00**

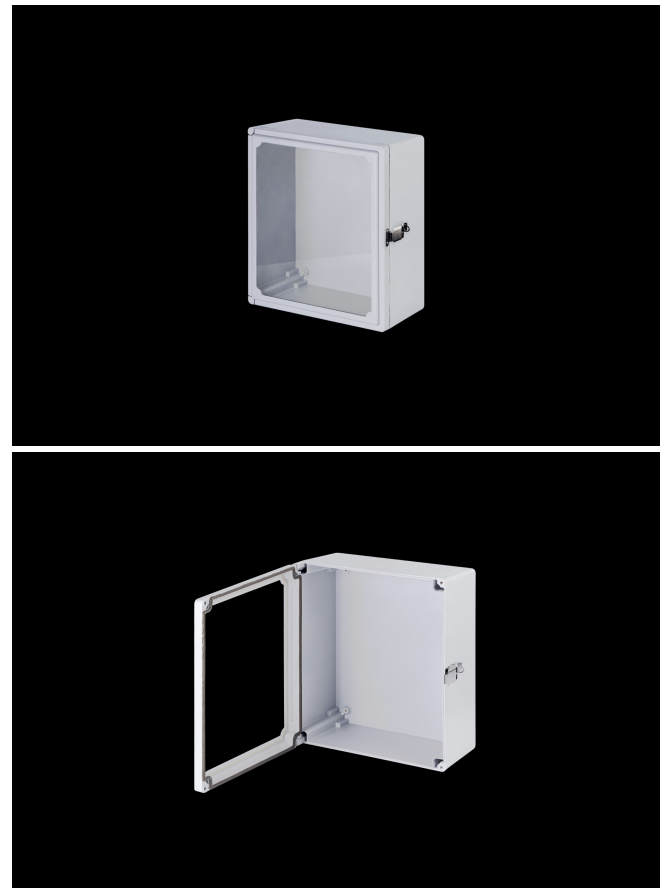
### DESCRIPTION

15H x 13W x 7D Inches Fiberglass Enclosure with a "HPL" Flush Bonded Window Cover (Hinged, Padlock Latch) are designed for general electrical and electronic applications as well as applications requiring broader environmental concerns. They feature excellent chemical resistance and watertight capabilities and suited for high visibility locations in commercial and industrial applications.

### APPLICATION

Designed for general electrical and electronic applications as well as applications requiring broader environmental concerns

### FEATURES



- Flush Bonded Window
- Stands up to an exceptionally broad range of chemicals
- High impact resistance
- Double insulated material no incidental electrical contact
- Hidden hinge design
- UV Resistant
- Soft edge design; smooth lines; flush cover
- Super abrasion resistant acrylic window
- High temperature; flame retardant; non corrosive; environmental designs
- Manufactured with SolarGuard®, Stahlin's proprietary formulation of non-halogenated fiberglass, offering superior resistance to outdoor exposure, chemicals and flames.
- Back Panels Available for all sizes

## General Information

Color	Gray
Cover Type	Window
Material	Fiberglass
Back Panel Screw Size	#10-32 x 3/8
Back Panel Recommended Torque	16-20 in-lbs
Back Panel Screw Material	304 SS
Mounting Foot Screw Size	5/16-18 x 1/2
Mounting Foot Screw Recommended Torque	10-14 in-lbs
Installation Mounting Torque	45 in-lbs Max
Metal Inserts	Brass
Hinge Material	304 SS
Latch Material	304 SS
Gasket Material	Poured In Place (PIP) Polyurethane Seamless
Country of Origin	USA

## DIMENSIONS

---

Height (in)	15.0
Width (in)	13.0
Depth (in)	7.0
Height (mm)	381.0
Width (mm)	330.2
Depth (mm)	177.8
Usable Depth (in)	6.5
Usable Depth (mm)	164.0

## STANDARDS

---

NEMA 10250; UL 50; UL 50e; UL508A	cULus Listed File #E64358
CSA Std. C22.2	cULus Listed File #E64358
Type	1; 3; 3R; 3S; 4; 4X; 12
UL1741	UL Listed File #E333478
Temperature Range °F	-76°F to +274°F
Temperature Range °C	-60°C to +134°C
Window Temperature Range °F	-26°F to +170°F
Window Temperature Range °C	-32°C to +76°C
Flammability Rating	UL94-5VA
NFPA No. 101 Flame Spread	Class A(1)
Outdoor Exposure UL746c	(f1) Rated
CE	Certified