

Enclosures **Classic Series**

Fiberglass Enclosure 13 x 11 x 6 Inches Classic Series with Hinged, Screw Down Opaque Cover



Catalog Number

CL1311HW

UPC

785928008054.0

List Price

\$446.73

DESCRIPTION

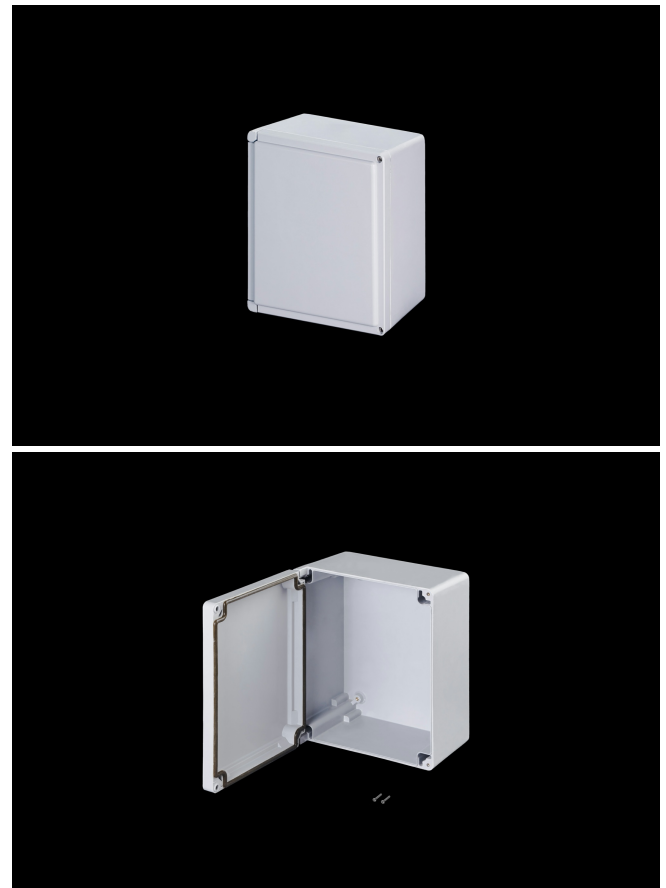
13H x 11W x 6D Inches Fiberglass Enclosure with an "HW" Opaque Cover (Hinged, 2 Cover Screws) are designed for general electrical and electronic applications as well as applications requiring broader environmental concerns. They feature excellent chemical resistance and watertight capabilities and suited for high visibility locations in commercial and industrial applications.

APPLICATION

Designed for general electrical and electronic applications as well as applications requiring broader environmental concerns

FEATURES

- Opaque Cover



- Stands up to an exceptionally broad range of chemicals
- High impact resistance
- Double insulated material no incidental electrical contact
- Hidden hinge design
- UV Resistant
- Soft edge design; smooth lines; flush cover
- Super abrasion resistant acrylic window
- High temperature; flame retardant; non corrosive; environmental designs
- Manufactured with SolarGuard®, Stahlin's proprietary formulation of non-halogenated fiberglass, offering superior resistance to outdoor exposure, chemicals and flames.
- Back Panels Available for all sizes

General Information

| | |
|--|--|
| Color | Gray |
| Cover Type | Opaque |
| Material | Fiberglass |
| Back Panel Screw Size | #10-32 x 3/8 |
| Back Panel Recommended Torque | 16-20 in-lbs |
| Back Panel Screw Material | 304 SS |
| Cover Screw Size | #10-24 x 1 |
| Cover Screw Recommended Torque | 20-24 in-lbs |
| Cover Screw Material | 304 SS |
| Mounting Foot Screw Size | 5/16-18 x 1/2 |
| Mounting Foot Screw Recommended Torque | 10-14 in-lbs |
| Installation Mounting Torque | 45 in-lbs Max |
| Metal Inserts | Brass |
| Hinge Material | 304 SS |
| Gasket Material | Poured In Place (PIP) Polyurethane Seamless |
| Country of Origin | USA |

DIMENSIONS

| | |
|-------------------|-------|
| Height (in) | 13.0 |
| Width (in) | 11.0 |
| Depth (in) | 6.0 |
| Height (mm) | 330.2 |
| Width (mm) | 279.4 |
| Depth (mm) | 152.4 |
| Usable Depth (in) | 5.9 |
| Usable Depth (mm) | 150.0 |

STANDARDS

| | |
|-----------------------------------|---------------------------|
| NEMA 10250; UL 50; UL 50e; UL508A | cULus Listed File #E64358 |
| CSA Std. C22.2 | cULus Listed File #E64358 |
| Type | 1; 3; 3R; 3S; 4; 4X; 12 |
| UL1741 | UL Listed File #E333478 |
| Temperature Range °F | -76°F to +274°F |
| Temperature Range °C | -60°C to +134°C |
| Flammability Rating | UL94-5VA |
| NFPA No. 101 Flame Spread | Class A(1) |
| Outdoor Exposure UL746c | (f1) Rated |
| CE | Certified |